





Supcool Refrigeration Equipment Factory



Creating The Best in Refrigeration
Comprehensive Refrigeration Solution Provider

www.Supcool.net





01
Bitzer®
 Open Pack
 Condensing Units
 P-01

02
Bitzer®
 Two-Stage
 Open Pack
 Condensing Units
 P-05

03
Bitzer®
 SRG/SRB Series
 Condensing
 Units with Housing
 P-07

11
Highly®
 DH&BH Rotary
 Compressor Unit
 P-31

12
Copeland®
 SUA Series Condensing
 Unit with Double-door
 P-33

13
**Mono-Block
 Unit**
 P-37

14
**LSQ Series Water
 Chiller with Housing**
 P-41

04
Bitzer®
 Semi-hermetic
 Compressor Rack
 System
 P-11

05
Bitzer®
 BBLG Series
 Screw Compressor Racks
 P-15

06
Copeland®
 Open Pack
 Condensing Units
 P-19

15
D&N Series Air Coolers
 P-43

16
**Vertical
 Blast Freezing
 Air Cooler**
 P-47

17
**DHF Series Dual
 Discharge Evaporators**
 P-49

07
Copeland®
 SRQ Series
 Condensing Units
 with Housing
 P-21

08
Copeland®
 SRW Condensing
 Units with
 Housing & Control
 P-23

09
Danfoss®
 Compressor Units with
 Microchannel Condenser
 P-25

10
Copeland®
 Scroll Compressor Unit
 with Electrical Control
 P-27

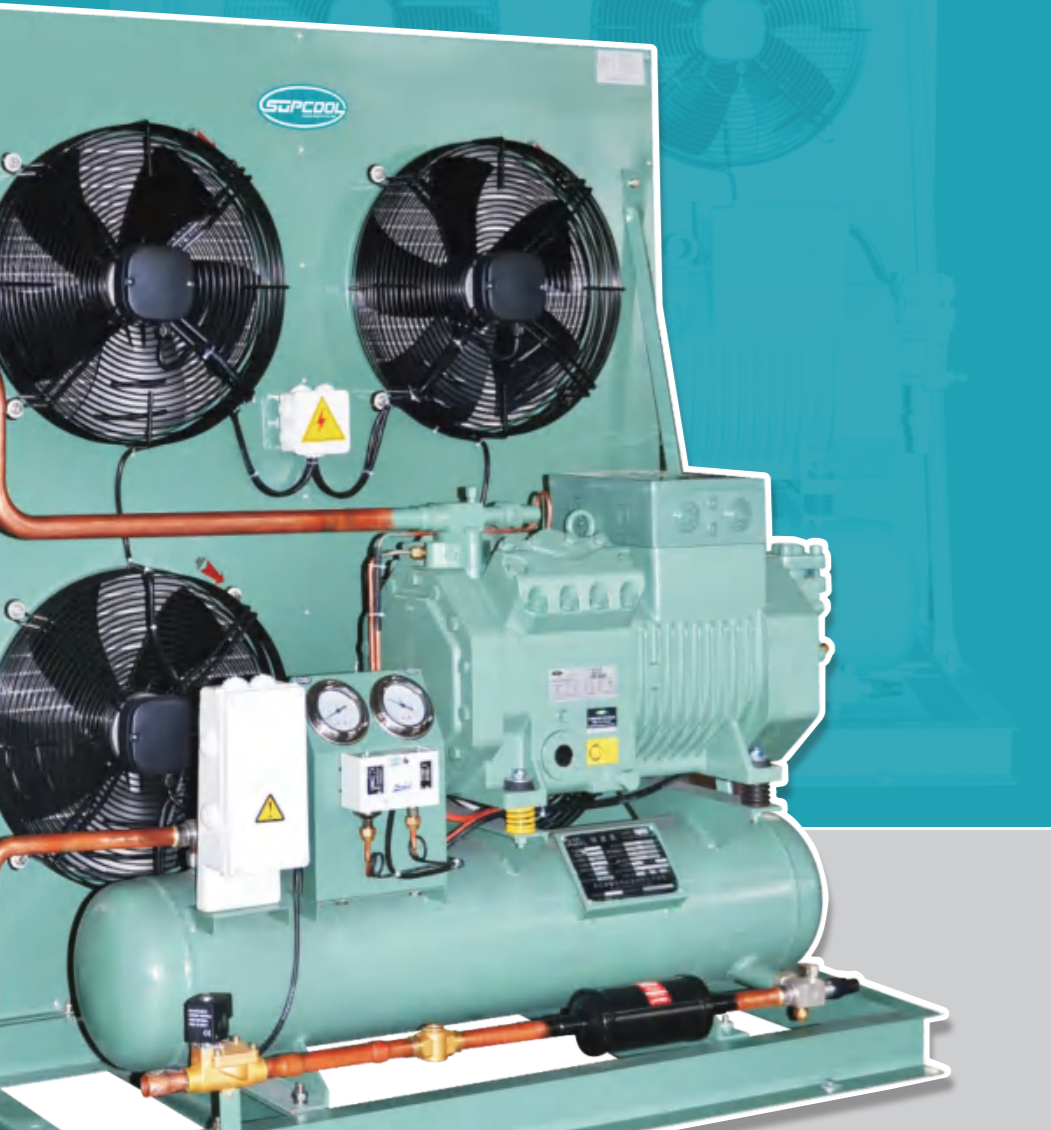
18
**Beverage Cooler
 Evaporators**
 P-51

19
**Air Cooled
 Condenser**
 P-53

20
**New Generation
 Condenser with
 Inner Groove
 Copper Tube**
 P-55

21
Cold Room
 P-57

Bitzer® Open Pack Condensing Units



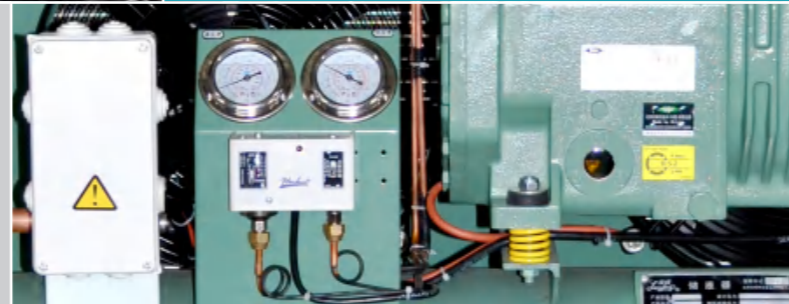
Nomenclature:

CD18/2GES-2Y

CD18 : [Condenser Model](#)
2GES-2Y : [Compressor Model](#)

Product Description:

- ★ Semi-Hermetic Bitzer compressor;
- ★ Copper tube & aluminum fin air cooled heat exchanger;
- ★ Or high efficient shell-tube water cooled condenser;
- ★ Low noise & high efficient Axial fan motor;
- ★ World famous brand refrigeration parts;
- ★ Water proof terminal box;
- ★ Widely application.



Supcool Refrigeration Equipment Factory

Air Cooled High Temperature Units

Model	CD22/2FES-3Y	CD28/2EES-3Y	CD33/2DES-3Y	CD43/2CES-4Y	CD48/4FES-5Y	CD55/4EES-6Y	CD70A/4DES-7Y	CD80A/4CES-9Y	
Compressor	2FES-3Y	2EES-3Y	2DES-3Y	2CES-4Y	4FES-5Y	4EES-6Y	4DES-7Y	4CES-9Y	
Temperature (°C)	0°C ~ +5°C								
Refrigerant	R404A / R448A / R449A								
Power supply	380V / 3P / 50Hz								
Condenser	Fan Qty	1	2	2	2	2	2	2	
	Supply Voltage (V)	380	380	380	380	380	380	380	
	Fan Input (W)	180×1	140×2	140×2	180×2	180×2	180×2	250×2	
Cooling Capacity & Input	Evap -5°C	Capacity (W)	5150	6450	7710	9490	10110	15380	18960
		Input (KW)	2.14	2.48	2.97	3.65	3.83	4.9	5.8
	Evap -10°C	Capacity (W)	4200	5230	6270	7740	8180	10430	15450
		Input (KW)	2.0	2.3	2.76	3.4	3.56	4.54	5.4
Pipe	Suction Pipe (mm)	φ16	φ22	φ22	φ22	φ22	φ28	φ28	
	Liquid Pipe (mm)	φ10	φ12	φ12	φ12	φ12	φ16	φ16	
Overall Dimension	A (mm)	620	960	960	1060	1300	1300	1280	
	B (mm)	650	680	680	680	750	750	710	
	C (mm)	560	460	510	720	670	770	910	
Mounting Size (a×b) (mm)	580×350	920×380	920×380	1020×380	1260×410	1260×410	1260×410	1000×665	
Condenser Size	A (mm)	/	/	/	/	/	/	/	
	B (mm)	/	/	/	/	/	/	/	
	C (mm)	/	/	/	/	/	/	/	

Model	CD100/4TES-12Y	CD130/4PES-15Y	CD150/4NES-20Y	CDV180/4HE-25Y	CDV219/4GE-30Y	CDV270/6HE-35Y	CDV328/6GE-40Y	CDV383/6FE-50Y	
Compressor	4TES-12Y	4PES-15Y	4NES-20Y	4HE-25Y	4GE-30Y	6HE-35Y	6GE-40Y	6FE-50Y	
Temperature (°C)	0°C ~ +5°C								
Refrigerant	R404A / R448A / R449A								
Power supply	380V / 3P / 50Hz								
Condenser	Fan Qty	4	4	4	2	2	3	3	
	Supply Voltage (V)	380	380	380	380	380	380	380	
	Fan Input (W)	180×4	180×4	180×4	800×2	800×2	800×3	800×3	
Cooling Capacity & Input	Evap -5°C	Capacity (W)	24800	28300	33400	44600	51800	68000	76800
		Input (KW)	8.83	10.05	11.81	15.86	18.28	23.9	27.4
	Evap -10°C	Capacity (W)	19990	22700	26900	36100	42000	54700	62200
		Input (KW)	8.15	9.23	10.88	14.66	16.93	22.1	25.3
Pipe	Suction Pipe (mm)	φ35	φ42	φ42	φ54	φ54	φ54	φ54	
	Liquid Pipe (mm)	φ16	φ22	φ22	φ22	φ22	φ28	φ28	
Overall Dimension	A (mm)	1280	1280	1350	1150	1150	1050	1600	
	B (mm)	710	750	800	570	570	600	610	
	C (mm)	1210	1460	1410	860	852	910	880	
Mounting Size (a×b) (mm)	1000×665	1000×705	1000×755	800×525	800×525	800×525	800×555	1000×600	
Condenser Size	A (mm)	/	/	/	1840	1840	2640	3040	
	B (mm)	/	/	/	980	980	1030	1030	
	C (mm)	/	/	/	1100	1100	1100	1100	

Remarks: 1. Condensing temp. 45°C; 2. Condenser will be separately installed for condensing units Cap. > 25Hp.

Air Cooled Middle & High Temperature Units

Model	CD22/2GES-2Y	CD22/2FES-2Y	CD28/2EES-2Y	CD33/2DES-2Y	CD43/2CES-3Y	CD48/4FES-3Y	CD55/4EES-4Y	CD70A/4DES-5Y	CD80A/4CES-6Y	
Compressor	2GES-2Y	2FES-2Y	2EES-2Y	2DES-2Y	2CES-3Y	4FES-3Y	4EES-4Y	4DES-5Y	4CES-6Y	
Temperature (°C)	-10°C ~ +5°C									
Refrigerant	R404A / R448A / R449A									
Power supply	380V / 3P / 50Hz									
Condenser	Fan Qty	1	1	2	2	2	2	2	2	
	Supply Voltage (V)	380	380	380	380	380	380	380	380	
	Fan Input (W)	180×1	180×1	140×2	140×2	180×2	180×2	250×2	250×2	
Cooling Capacity & Input	Evap -5°C	Capacity (W)	4060	5010	7770	10400	13220	15800	19150	
		Input (KW)	1.94	2.41	2.79	3.41	4.16	4.49	5.76	8.13
	Evap -10°C	Capacity (W)	3240	4000	5180	6220	7700	10560	12610	15250
		Input (KW)	1.81	2.25	2.56	3.13	3.84	4.17	5.34	7.51
	Evap -15°C	Capacity (W)	2550	3140	4070	4900	6100	8330	9940	11980
		Input (KW)	1.66	2.06	2.31	2.84	3.50	3.82	4.87	6.82
Pipe	Suction Pipe (mm)	φ16	φ16	φ22	φ22	φ22	φ28	φ28	φ28	
	Liquid Pipe (mm)	φ10	φ10	φ12	φ12	φ12	φ12	φ16	φ16	
Overall Dimension	A (mm)	620	620	960	960	1060	1300	1300	1280	
	B (mm)	650	650	680	680	680	750	750	710	
	C (mm)	560	560	460	510	720	670	870	910	
Mounting Size (a×b) (mm)	580×350	580×350	920×380	920×380	1020×380	1260×410	1260×410	1260×410	1000×665	
Condenser Size	A (mm)	/	/	/	/	/	/	/	/	
	B (mm)	/	/	/	/	/	/	/	/	
	C (mm)	/	/	/	/	/	/	/	/	

Model	CD100/4TES-9Y	CD130/4PES-12Y	CD150/4NES-14Y	CDV180/4HE-18Y	CDV219/4GE-23Y	CDV270/6HE-28Y	CDV328/6GE-34Y	CDV383/6FE-44Y	
Compressor	4TES-9Y	4PES-12Y	4NES-14Y	4HE-18Y	4GE-23Y	6HE-28Y	6GE-34Y	6FE-44Y	
Temperature (°C)	-10°C ~ +5°C								
Refrigerant	R404A / R448A / R449A								
Power supply	380V / 3P / 50Hz								
Condenser	Fan Qty	4	4	4	2	2	3	3	
	Supply Voltage (V)	380	380	380	380	380	380	380	
	Fan Input (W)	180×4	180×4	180×4	780×2	780×2	800×3	800×3	800×3
Cooling Capacity & Input	Evap -5°C	Capacity (W)	24200	27600	32900	44200	51000	60200	75200
		Input (KW)	10.18	11.29	13.63	18.39	22.0	25.9	32.7
	Evap -10°C	Capacity (W)	19160	21800	26100	35400	41100	48600	60800
		Input (KW)	9.28	10.27	12.48	16.89	20.1	23.9	30.1
	Evap -15°C	Capacity (W)	14960	16850	20300	28000	32600	38800	48600
		Input (KW)	8.32	9.17	11.23	15.3	18.21	21.7	27.4
Pipe	Suction Pipe (mm)	φ35	φ35	φ35	φ42	φ54	φ54	φ54	
	Liquid Pipe (mm)	φ16	φ22	φ22	φ22	φ22	φ28	φ28	
Overall Dimension	A (mm)	1280	1280	1350	1150	1150	1050	1050	
	B (mm)	710	750	800	570	570	600	600	
	C (mm)	1210	1460	1410	860	860	910	910	
Mounting Size (a×b) (mm)	1000×665	1000×705	1000×755	800×525	800×525	800×525	800×555	1000×600	
Condenser Size	A (mm)	/	/	/	1840	1840	2640	3040	
	B (mm)	/	/	/	980	980	1030	1030	
	C (mm)	/	/	/	1100	1100	1100	1100	

Remarks: 1. Condensing temp. 45°C; 2. Condenser will be separately installed for condensing units Cap. > 18HP.

Air Cooled Middle & Low Temperature Units

Model	CD15/2FES-2Y	CD18/2EES-2Y	CD22/2DES-2Y	CD28/2CES-3Y	CD33/4FES-3Y	CD36/4EES-4Y	CD43/4DES-5Y	CD48/4CES-6Y	
Compressor	2FES-2Y	2EES-2Y	2DES-2Y	2CES-3Y	4FES-3Y	4EES-4Y	4DES-5Y	4CES-6Y	
Temperature (°C)	-30°C ~ -15°C								
Refrigerant	R404A / R448A / R449A								
Power supply	380V / 3P / 50Hz								
Condenser	Fan Qty	1	1	1	2	2	2	2	
	Supply Voltage (V)	380	380	380	380	380	380	380	
	Fan Input (W)	140	180	180	140×2	140×2	180×2	180×2	180×2
Cooling Capacity & Input	Evap -25°C	Capacity (W)	1820	2370	2870	3630	3890	4940	5900
		Input (KW)	1.64	1.79	2.21	2.76	3.06	3.84	4.55
	Evap -30°C	Capacity (W)	1330	1720	2110	2690	2910	3690	4400
		Input (KW)	1.42	1.53	1.89	2.39	2.66	3.32	3.94
	Evap -35°C	Capacity (W)	920	1200	1480	1920	2130	2680	3200
		Input (KW)	1.19	1.26	1.58	2.03	2.26	2.8	3.34
Evap -45°C	Capacity (W)	590	770	980	1300	1500	1880	2250	
	Input (KW)	0.97	1.01	1.27	1.67	1.88	2.3	2.76	
Pipe	Suction Pipe (mm)	φ16	φ22	φ22	φ22	φ22	φ28	φ28	
	Liquid Pipe (mm)	φ10	φ10	φ12	φ12	φ12	φ12	φ12	
Overall Dimension	A (mm)	620	620	620	960	960	1060	1300	
	B (mm)	650	650	650	680	680	680	750	
	C (mm)	510	560	560	460	510	620	670	
Mounting Size (a×b) (mm)	580×350	580×350	580×350	920×380	920×380	1020×380	1020×380	1260×410	
Condenser Size	A (mm)	/	/	/	/	/	/	/	
	B (mm)	/	/	/	/	/	/	/	
	C (mm)	/	/	/	/	/	/	/	

Model	CD70A/4TES-9Y	CD80A/4PES-12Y	CD100/4NES-14Y	CD130/4HE-18Y	CD150/4GE-23Y	CD180/4FE-28Y	CDV180/6GE-34Y	CDV219A/6FE-44Y	
Compressor	4TES-9Y	4PES-12Y	4NES-14Y	4HE-18Y	4GE-23Y	4FE-28Y	6GE-34Y	6FE-44Y	
Temperature (°C)	-30°C ~ -15°C								
Refrigerant	R404A / R448A / R449A								
Power supply	380V / 3P / 50Hz								
Condenser	Fan Qty	2	2	4	4	4	2	2	
	Supply Voltage (V)	380	380	380	380	380	380	380	
	Fan Input (W)	250×2	250×2	180×4	180×4	180×4	180×4	780×2	780×2
Cooling Capacity & Input	Evap -25°C	Capacity (W)	8620	9500	11700	16690	19670	23500	35300
		Input (KW)	6.35	6.88	8.58	12.0	14.27	17.13	21.8
	Evap -30°C	Capacity (W)	6310	6830	8550	12450	14820	17760	22600
		Input (KW)	5.38	5.74	7.24	10.35	12.33	14.78	18.95
	Evap -35°C	Capacity (W)	4460	4710	6030	9000	10870	12980	16680
		Input (KW)	4.46	4.64	5.94	8.75	10.46	12.46	16.19
Evap -40°C	Capacity (W)	3000	3060	4060	6220	7690	9070	11910	
	Input (KW)	3.61	3.62	4.72	7.23	8.71	10.4	13.56	
Pipe	Suction Pipe (mm)	φ35	φ35	φ35	φ42	φ54	φ54	φ54	
	Liquid Pipe (mm)	φ16	φ16	φ22	φ22	φ22	φ22	φ22	
Overall Dimension	A (mm)	1280	1280	1280	1280	1350	1350	1050	
	B (mm)	710	710	750	800	850	850	600	
	C (mm)	910	910	1210	1460	1410	1410	1050	
Mounting Size (a×b) (mm)	1000×665	1000×665	1000×705	1000×755	1000×805	1000×805	800×525	800×555	
Condenser Size	A (mm)	/	/	/	/	/	/	1840	
	B (mm)	/	/	/	/	/	/	980	
	C (mm)	/	/	/	/	/	/	1100	

Remarks: 1. Condensing temp. 45°C; 2. Condenser will be separately installed for condensing units Cap. > 34HP.

Bitzer® Two-Stage Open Pack Condensing Units



Nomenclature:

CD180/S6G25.2Y

CD180 : Condenser

S6G252Y : Compressor Model

Product Description:

- ★ Bitzer Semi-Hermetic, two-stage compressor;
- ★ Lowest temperature approach at -55°C with R404A;
- ★ Sub-cooler equipped which greatly improve system capacity and EER;
- ★ World famous brand refrigeration parts;
- ★ Especially suitable for blast freezer & Ultra-low temperature cold room;
- ★ Matched CIC part (controlled injection cooling).

www.Supcool.net



Supcool Refrigeration Equipment Factory

Air Cooled Two-Stage Units

Model	CD36/S4T5.2Y	CD55/S4N8.2Y	CD100/S4G12.2Y	CD130/S6J16.2Y	CD150/S6G20.2Y	CD180/S6G25.2Y	CDV219/S6F30.2Y	
Temperature (°C)	-40°C ~ -25°C							
Refrigerant	R404A / R448A / R449A							
Power Supply	380V/3P/50Hz							
Condenser	Fan Qty	2	2	4	4	4	4	2
	Power Supply	380V/3P/50Hz						
	Fan Input (W)	180×2	180×2	180×4	180×4	180×4	180×4	800×2
Evap -35°C	Capacity (W)	5650	8010	12540	17480	20100	23000	27200
	Input (KW)	4.59	6.56	9.9	13.96	16.17	18.56	22.2
Evap -40°C	Capacity (W)	4550	6460	10260	14380	16580	18920	22400
	Input (KW)	4.17	5.95	8.96	12.56	14.55	16.7	19.98
Evap -45°C	Capacity (W)	3600	5130	8260	11640	13430	15340	18200
	Input (KW)	3.73	5.33	8	11.21	12.99	14.92	17.85
Pipe	Suction Pipe (mm)	φ28	φ28	φ35	φ42	φ42	φ42	φ42
	Liquid Pipe (mm)	φ16	φ16	φ22	φ22	φ22	φ22	φ22
Overall Dimension	A (mm)	1085	1270	1270	1270	1340	1340	1250
	B (mm)	930	930	1050	1050	1110	1130	730
	C (mm)	660	810	1210	1460	1410	1410	930
Mounting Size (a×b) (mm)	800×885	800×885	1000×1005	1000×1005	1000×1065	1000×1085	910×685	

Remarks: 1. Condensing temp: 45°C; 2. CDV219/S6F30.2Y has the separate condenser with the unit. The size information above not includes the condenser.

Bitzer®

SRG/SRB Series Condensing Units with Housing



Nomenclature:

SRB05MY

SR : Series Code

B : Type of Condenser

B: V type condenser; G: U type condenser

05 : Compressor Nominal Capacity (HP)

M : Temperature

M: -5 ~ +5°C, L: -15 ~ -30°C

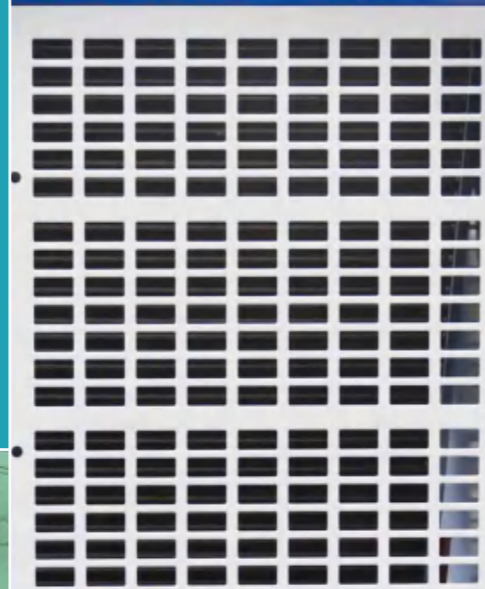
Y : Refrigerant

Y: R404A / R448A / R449A



Product Description:

- ★ Widely application for all kinds of coldroom
- ★ System with alarm function
- ★ Copper tube & aluminum fin aircooled heat exchanger
- ★ Low noise & high efficient axial fan motor
- ★ One of the Condenser fan could be turned off with the signal come from the single HP.



Supcool Refrigeration Equipment Factory

Middle & High Temperature SRG Units

Model	SRG02MY	SRG03MY	SRG04MY	SRG05MY	SRG06MY	SRG09MY	SRG12MY	SRG14MY	SRG18MY	SRG23MY	
Room Temperature (°C)	-5°C ~ +5°C										
Refrigerant	R404A / R448A / R449A										
Power Supply	380V/3P/50Hz										
Compressor	2DES-2Y	2CES-3Y	4EES-4Y	4DES-5Y	4CES-6Y	4TES-9Y	4PES-12Y	4NES-14Y	4HE-18Y	4GE-23Y	
Condenser	Fan Qty	1	1	1	1	1	2	2	2	2	
	Supply Voltage (V)	220	220	220	220	220	220	220	220	220	
	Fan Input (W)	250	250	550	550	550	380×2	380×2	750×2	750×2	
Capacity & Input	Eavp -5°C	Cooling Capacity (W)	7770	9590	13220	15800	19150	24200	27600	32900	44200
		Input (KW)	3.41	4.16	5.76	6.8	8.13	10.18	11.29	13.63	18.39
	Eavp -10°C	Cooling Capacity (W)	6220	7700	10560	12610	15250	19160	21800	26100	35400
		Input (KW)	3.13	3.84	5.34	6.3	7.51	9.28	10.27	12.48	16.89
	Eavp -15°C	Cooling Capacity (W)	4900	6100	8330	9940	11980	14960	16850	20300	28000
		Input (KW)	2.84	3.5	4.87	5.75	6.82	8.32	9.17	11.23	15.3
Pipe	Suction Pipe (W)	φ22	φ22	φ28	φ28	φ28	φ35	φ35	φ35	φ42	
	Liquid Pipe (mm)	φ12	φ12	φ12	φ12	φ12	φ16	φ16	φ22	φ22	
Overall Dimension	L (mm)	973	973	973	973	973	1360	1360	1876	1876	
	W (mm)	715	715	865	865	865	865	865	965	965	
	H (mm)	815	815	1235	1235	1235	1235	1235	1235	1235	
Mounting Size (a×b) (mm)	570×635	570×635	570×825	570×825	570×825	950×825	950×825	755×925	755×925	755×925	

Remarks: 1.Ambient Temp. 32°C, condensing temp.45°C.

Middle & Low Temperature SRG Units

Model	SRG04LY	SRG05LY	SRG06LY	SRG09LY	SRG12LY	SRG14LY	SRG18LY	SRG23LY	SRG28LY	SRG34LY	
Room Temperature (°C)	-15°C ~ -30°C										
Refrigerant	R404A / R448A / R449A										
Power Supply	380V/3P/50Hz										
Compressor	4EES-4Y	4DES-5Y	4CES-6Y	4TES-9Y	4PES-12Y	4NES-14Y	4HE-18Y	4GE-23Y	4FE-28Y	6GE-34Y	
Condenser	Fan Qty	1	1	1	1	1	2	2	2	2	
	Supply Voltage (V)	220	220	220	220	220	220	220	220	220	
	Fan Input (W)	250	250	250	550	550	550	380×2	380×2	750×2	
Capacity & Input	Eavp -25°C	Cooling Capacity (W)	4940	5900	7040	8620	9500	11700	16690	19670	23500
		Input (KW)	3.84	4.55	5.36	6.35	6.88	8.58	12.0	14.27	17.13
	Eavp -30°C	Cooling Capacity (W)	3690	4400	5220	6310	6830	8550	12450	14820	17760
		Input (KW)	3.32	3.94	4.61	5.38	5.74	7.24	10.35	12.33	14.78
	Eavp -35°C	Cooling Capacity (W)	2680	3200	3760	4460	4710	6030	9000	10870	12980
		Input (KW)	2.8	3.34	3.89	4.46	4.64	5.94	8.75	10.46	12.46
Eavp -40°C	Cooling Capacity (W)	1880	2250	2610	3000	3060	4060	6220	7690	9070	
	Input (KW)	2.3	2.76	3.2	3.61	3.62	4.72	7.23	8.71	10.22	
Pipe	Suction Pipe (mm)	φ28	φ28	φ28	φ35	φ35	φ35	φ42	φ42	φ54	
	Liquid Pipe (mm)	φ12	φ12	φ12	φ16	φ16	φ22	φ22	φ22	φ22	
Overall Dimension	L (mm)	973	973	973	973	973	1360	1360	1876	1876	
	W (mm)	715	715	715	865	865	865	865	965	965	
	H (mm)	815	815	815	1235	1235	1235	1235	1235	1235	
Mounting Size (a×b) (mm)	570×675	570×675	570×675	570×825	570×825	570×825	950×825	950×825	755×925	755×925	

Remarks: 1.Ambient Temp. 32°C, condensing temp.45°C.

Middle & High Temperature SRB Units

Model	SRB20MY	SRB25MY	SRB30MY	SRB35MY	SRB40MY	SRB50MY	
Room Temperature (°C)	-5°C ~ +5°C						
Refrigerant	R404A / R448A / R449A						
Power Supply	380V/3P/50Hz						
Compressor	4NES-20Y	4HE-25Y	4GE-30Y	4FE-35Y	6GE-40Y	6FE-50Y	
Condenser	Fan Qty	2	2	2	3	3	
	Supply Voltage (V)	2x12200	2x15000	2x19000	3x13200	3x15000	
	Fan Input (W)	2x500	2x750	2x1100	3x550	3x750	
Capacity & Input	Eavp +5°C	Cooling capacity (W)	41600	60900	65900	81600	85000
		Input (KW)	18.05	22.3	26.9	34.4	38.6
	Eavp -0°C	Cooling Capacity (W)	36000	52200	57900	70800	76400
		Input (KW)	15.85	20.6	25	31.8	38.3
Eavp -15°C	Cooling Capacity (W)	21700	30300	36100	43150	48200	
	Input (KW)	12.15	15.85	18.85	25.2	27.5	
Pipe	Suction Pipe (mm)	Φ19	Φ19	Φ19	Φ22	Φ22	
	Liquid Pipe (mm)	Φ41	Φ54	Φ54	Φ54	Φ67	
Overall Dimension	L (mm)	1750	1900	2250	2650	2950	
	W (mm)	1000	1175	1175	1175	1175	
	H (mm)	1900	1980	1980	1980	1980	
Mounting Size (a x b) (mm)	1050x920	1200x1100	1550x1100	1950x1100	2250x1100	2700x1100	

Remarks: 1.Ambient Temp. 32°C, condensing temp.45°C.

Middle & Low Temperature SRB Units

Model	SRB18LY	SRB23LY	SRB28LY	SRB34LY	SRB44LY		
Room Temperature (°C)	-10°C ~ -25°C						
Refrigerant	R404A / R448A / R449A						
Power Supply	380V/3P/50Hz						
Compressor	4HE-18Y	4GE-23Y	6HE-28Y	6GE-34Y	6FE-44Y		
Condenser	Fan Qty	2	2	2	2		
	Supply Voltage (V)	2X8720	2X10820	2X10820	2X15000	2X19000	
	Fan Input (W)	2X600	2X780	2X780	2X750	2X1100	
Capacity & Input	Eavp -15°C	Cooling Capacity (W)	25300	28800	31600	41500	
		Input (KW)	16.7	19.8	25.4	23.6	27.7
	Eavp -25°C	Cooling Capacity (W)	13250	17200	22400	27000	30400
		Input (KW)	9.56	12.8	14.05	18.5	21.2
Eavp -35°C	Cooling Capacity (W)	10350	13600	18100	20900	23400	
	Input (KW)	8.4	11.05	16.2	16.15	18.15	
Pipe	Suction Pipe (mm)	Φ16	Φ29	Φ19	Φ22	Φ22	
	Liquid Pipe (mm)	Φ41	Φ54	Φ54	Φ54	Φ67	
Overall Dimension	L (mm)	1550	1700	1700	1900	2250	
	W (mm)	900	1000	1000	1175	1175	
	H (mm)	1500	1780	1780	1980	1980	
Mounting Size (a x b) (mm)	900X820	1000X920	1000X920	1200X1100	1550X1100		

Remarks: 1.Ambient Temp. 32°C, condensing temp.45°C.



Creating The Best in Refrigeration
Comprehensive Refrigeration Solution Provider



Bitzer® Semi-hermetic Compressor Rack System



Nomenclature:

BBF3-30MY

B : Series Code

B : Compressor Type

B: Bitzer Semi-hermetic

F : Cooling Type

F: Air Cooled or Evaporative

3 : Quantity of the Compressors

30 : Total Nominal Capacity (HP)

M : Temperature

M: 5 ~ -5°C , L: -15 ~ -30°C

Y : Refrigerant

Y: R404A / R448A / R449A

Product Description:

- ★ Semi-Hermetic Bitzer ECOLINE compressors rack;
- ★ Huge cooling capacity;
- ★ Multi stage energy adjustment available;
- ★ Compact design for easy installation;
- ★ All-around protection for each compressor come from the precise electrical control.



2 Compressors Rack For Middle & High Temperature

Model	BBF2-18MY	BBF2-24MY	BBF2-28MY	BBF2-36MY	BBF2-46MY	BBF2-56MY	BBF2-68MY	BBF2-88MY		
Temperature (°C)	-5°C ~ +5°C									
Refrigerant	R404A / R448A / R449A									
Power Supply	380V/50Hz									
Compressor	Type	Semi-hermetic								
	Model	4TES-9Y	4PES-12Y	4NES-14Y	4HE-18Y	4GE-23Y	4FE-28Y	6GE-34Y	6FE-44Y	
Capacity & Input	Quantity	2	2	2	2	2	2	2	2	
	Eavp -5°C	Capacity (KW)	48400	55200	65800	88400	102000	120400	150400	180600
		Input (KW)	20.36	22.58	27.26	36.78	44.0	51.6	65.4	77.8
	Eavp -10°C	Capacity (KW)	38320	43600	52200	70800	82200	97200	121600	145800
		Input (KW)	18.56	20.54	24.96	33.78	40.2	47	60.2	72.0
	Eavp -15°C	Capacity (KW)	29920	33700	40600	56000	65200	77600	97200	116400
Input (KW)		16.64	18.34	22.46	30.6	36.42	43.4	54.8	65.8	
Pipe	Suction Pipe (mm)	φ42	φ54	φ54	φ67	φ67	φ76	φ76	φ76	
	Liquid Pipe (mm)	φ22	φ22	φ28	φ28	φ28	φ35	φ35	φ35	
	Discharge Pipe (mm)	φ35	φ35	φ35	φ42	φ42	φ54	φ54	φ54	
	Liquid in Pipe (mm)	φ28	φ28	φ28	φ35	φ35	φ42	φ42	φ42	
Overall Dimension	L (mm)	1950	2100	2100	2200	2200	2400	2400	2400	
	W (mm)	1120	1120	1120	1120	1120	1120	1120	1120	
	H (mm)	1700	1700	1700	1700	1700	1700	1700	1700	

Remarks: 1.Ambient Temp. 32°C , condensing temp.45°C.

3 Compressors Rack For Middle & High Temperature

Model	BBF3-27MY	BBF3-36MY	BBF3-42MY	BBF3-54MY	BBF3-69MY	BBF3-84MY	BBF3-102MY	BBF3-132MY		
Temperature (°C)	-5°C ~ +5°C									
Refrigerant	R404A / R448A / R449A									
Power Supply	380V/50Hz									
Compressor	Type	Semi-hermetic								
	Model	4TES-9Y	4PES-12Y	4NES-14Y	4HE-18Y	4GE-23Y	4FE-28Y	6GE-34Y	6FE-44Y	
Capacity & Input	Quantity	3	3	3	3	3	3	3	3	
	Eavp -5°C	Capacity (KW)	72100	82900	98100	132600	152600	180000	221000	270200
		Input (KW)	30.5	33.9	40.9	55.2	66.0	78.0	98.1	116.7
	Eavp -10°C	Capacity (KW)	57300	65400	78900	107300	123000	146300	181400	219200
		Input (KW)	27.8	30.8	37.4	50.7	60.3	72.0	90.3	108.0
	Eavp -15°C	Capacity (KW)	44270	50400	60700	85300	96300	113600	142500	174780
Input (KW)		25.0	27.5	33.7	45.9	54.6	65.8	82.2	98.7	
Pipe	Suction Pipe (mm)	φ54	φ67	φ67	φ76	φ76	φ108	φ108	φ108	
	Liquid Pipe (mm)	φ22	φ28	φ28	φ35	φ35	φ42	φ42	φ42	
	Discharge Pipe (mm)	φ35	φ42	φ42	φ54	φ54	φ67	φ67	φ67	
	Liquid in Pipe (mm)	φ28	φ35	φ35	φ42	φ42	φ54	φ54	φ54	
Overall Dimension	L (mm)	2750	2750	2750	2850	2850	3150	3150	3200	
	W (mm)	1120	1120	1120	1120	1120	1120	1120	1120	
	H (mm)	1700	1700	1700	1850	1850	1850	1850	1850	

Remarks: 1. All the above data calculated base on the condensing temperature 45°C.

4 Compressors Rack For Middle & High Temperature

Model	BBF4-36MY	BBF4-48MY	BBF4-56MY	BBF4-72MY	BBF4-92MY	BBF4-112MY	BBF4-136MY	BBF4-176MY		
Temperature (°C)	-5°C ~ +5°C									
Refrigerant	R404A / R448A / R449A									
Power Supply	380V/50Hz									
Compressor	Semi-hermetic									
Compressor	Type									
Compressor	Model	4TES-9Y	4PES-12Y	4NES-14Y	4HE-18Y	4GE-23Y	4FE-28Y	6GE-34Y	6FE-44Y	
Compressor	Quantity	4	4	4	4	4	4	4	4	
Capacity & Input	Eavp -5°C	Capacity (KW)	96800	113200	134800	180800	208800	259600	308000	369600
		Input (KW)	40.7	45.2	54.5	73.6	88.0	108.0	130.8	155.6
	Eavp -10°C	Capacity (KW)	76400	87200	104200	141400	164000	194400	243200	291600
		Input (KW)	37.1	41.1	49.9	67.6	80.4	99.6	120.4	144.0
	Eavp -15°C	Capacity (KW)	59360	67520	81600	110400	130400	154800	199200	230400
		Input (KW)	33.3	36.7	44.9	61.2	72.8	90.4	109.6	131.6
Pipe	Suction Pipe (mm)	φ54	φ67	φ76	φ76	φ108	φ108	φ108	φ133	
	Liquid Pipe (mm)	φ28	φ28	φ35	φ35	φ42	φ42	φ42	φ42	
	Discharge Pipe (mm)	φ42	φ54	φ54	φ54	φ67	φ67	φ67	φ79	
	Liquid in Pipe (mm)	φ35	φ35	φ42	φ42	φ54	φ54	φ54	φ54	
Overall Dimension	L (mm)	3300	3300	3300	3500	3800	3800	3800	3800	
	W (mm)	1120	1120	1120	1120	1120	1120	1120	1120	
	H (mm)	1700	1700	1700	1850	1850	1850	1850	1850	

Remarks: 1. All the above data calculated base on the condensing temperature 45°C.

2 Compressors Rack For Middle & Low Temperature

Model	BBF2-18LY	BBF2-28LY	BBF2-36LY	BBF2-46LY	BBF2-56LY	BBF2-68LY	BBF2-88LY		
Temperature (°C)	-15°C ~ -30°C								
Refrigerant	R404A / R448A / R449A								
Power Supply	380V/50Hz								
Compressor	Semi-hermetic								
Compressor	Type								
Compressor	Model	4TES-9Y	4NES-14Y	4HE-18Y	4GE-23Y	4FE-28Y	6GE-34Y	6FE-44Y	
Compressor	Quantity	2	2	2	2	2	2	2	
Capacity & Input	Eavp -25°C	Capacity (KW)	17240	23400	33380	39340	47200	59400	70600
		Input (KW)	12.7	17.2	24.0	28.5	35.38	43.6	52.4
	Eavp -30°C	Capacity (KW)	12600	17100	24900	29640	35580	45200	53200
		Input (KW)	10.8	14.5	20.7	24.7	30.4	37.9	45.4
	Eavp -35°C	Capacity (KW)	8920	12060	18000	21740	25920	33360	38920
		Input (KW)	8.9	11.9	17.5	20.9	25.5	32.4	38.7
Eavp -40°C	Capacity (KW)	6000	8120	12440	15380	18140	23820	27220	
	Input (KW)	7.2	9.4	14.5	17.4	20.8	27.1	32.1	
Pipe	Suction Pipe (mm)	φ54	φ54	φ54	φ67	φ67	φ76	φ76	
	Liquid Pipe (mm)	φ22	φ22	φ22	φ22	φ28	φ28	φ28	
	Discharge Pipe (mm)	φ35	φ35	φ35	φ42	φ42	φ54	φ54	
	Liquid in Pipe (mm)	φ28	φ28	φ28	φ28	φ35	φ35	φ35	
Overall Dimension	L (mm)	2100	2100	2100	2200	2400	2400	2400	
	W (mm)	1120	1120	1120	1120	1120	1120	1120	
	H (mm)	1700	1700	1700	1700	1700	1700	1700	

Remarks: 1. All the above data calculated base on the condensing temperature 45°C.

3 Compressors Rack For Middle & Low Temperature

Model	BBF3-27LY	BBF3-42BY	BBF3-54LY	BBF3-69LY	BBF3-84LY	BBF3-102LY	BBF3-132LY		
Temperature (°C)	-15°C ~ -30°C								
Refrigerant	R448A/R449A								
Power Supply	380V/50Hz								
Compressor	Semi-hermetic								
Compressor	Type								
Compressor	Model	4TES-9Y	4NES-14Y	4HE-18Y	4GE-23Y	4FE-28Y	6GE-34Y	6FE-44Y	
Compressor	Quantity	3	3	3	3	3	3	3	
Capacity & Input	Eavp -25°C	Capacity (KW)	25860	35100	50070	59000	70800	89100	105900
		Input (KW)	19.1	25.7	36.0	42.8	53.07	65.4	78.6
	Eavp -30°C	Capacity (KW)	18930	25650	37350	44460	53020	67800	79800
		Input (KW)	16.1	21.7	31.1	37.0	45.6	56.9	68.1
	Eavp -35°C	Capacity (KW)	13380	18090	27000	32610	38780	50000	58380
		Input (KW)	13.4	17.8	26.3	31.4	38.25	48.6	58.1
Eavp -40°C	Capacity (KW)	9000	12180	18660	23070	27210	35700	40830	
	Input (KW)	10.8	14.2	21.7	26.1	31.2	40.7	48.2	
Pipe	Suction Pipe (mm)	φ54	φ54	φ67	φ76	φ76	φ108	φ108	
	Liquid Pipe (mm)	φ22	φ22	φ28	φ28	φ28	φ35	φ35	
	Discharge Pipe (mm)	φ42	φ42	φ42	φ42	φ54	φ54	φ67	
	Liquid in Pipe (mm)	φ28	φ28	φ35	φ35	φ35	φ42	φ42	
Overall Dimension	L (mm)	2750	2750	2750	2850	3150	3150	3150	
	W (mm)	1120	1120	1120	1120	1120	1120	1120	
	H (mm)	1700	1700	1700	1700	1850	1850	1850	

Remarks: 1. All the above data calculated base on the condensing temperature 45°C.

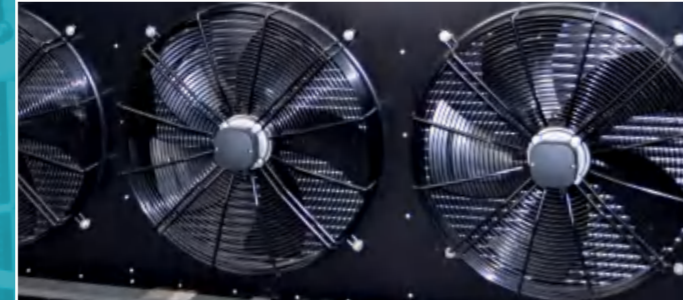
4 Compressors Rack For Middle & Low Temperature

Model	BBF4-36LY	BBF4-56LY	BBF4-72LY	BBF4-92LY	BBF4-112LY	BBF4-136LY	BBF4-176LY		
Temperature (°C)	-15°C ~ -30°C								
Refrigerant	R404A / R448A / R449A								
Power Supply	380V/50Hz								
Compressor	Semi-hermetic								
Compressor	Type								
Compressor	Model	4TES-9Y	4NES-14Y	4HE-18Y	4GE-23Y	4FE-28Y	6GE-34Y	6FE-44Y	
Compressor	Quantity	4	4	4	4	4	4	4	
Capacity & Input	Eavp -25°C	Capacity (KW)	34480	46800	66760	78680	94400	118800	141200
		Input (KW)	25.4	34.3	48.0	57.1	70.76	87.2	104.8
	Eavp -30°C	Capacity (KW)	25240	34200	49800	59280	71360	90400	106400
		Input (KW)	21.5	29.0	41.4	49.3	60.8	75.8	90.8
	Eavp -35°C	Capacity (KW)	17840	24120	36000	43480	52040	66720	77840
		Input (KW)	17.8	23.8	35.0	41.8	51.0	64.8	77.4
Eavp -40°C	Capacity (KW)	12000	16240	24880	30760	36280	47640	54440	
	Input (KW)	14.4	18.9	28.9	34.8	41.6	54.2	64.3	
Pipe	Suction Pipe (mm)	φ54	φ54	φ67	φ76	φ108	φ108	φ108	
	Liquid Pipe (mm)	φ22	φ22	φ28	φ28	φ35	φ35	φ35	
	Discharge Pipe (mm)	φ42	φ42	φ54	φ54	φ54	φ67	φ67	
	Liquid in Pipe (mm)	φ28	φ28	φ35	φ35	φ42	φ42	φ42	
Overall Dimension	L (mm)	3300	3300	3500	3500	3800	3800	3800	
	W (mm)	1120	1120	1120	1120	1120	1120	1120	
	H (mm)	1700	1700	1700	1700	1850	1850	1850	

Remarks: 1. All the above data calculated base on the condensing temperature 45°C.

Bitzer®

BBLG Series Screw Compressor Racks



Nomenclature:

BLGF3-225JY

- B:** Compressor Brand B: Bitzer
- LG:** Compressor Type
LG: Semi-hermetic screw compressor
- F:** Condensing Type F: Air cooled
- 3:** Qty of Compressor None for 1pc
- 225:** Nominal Cooling Capacity (HP)
- J:** Temperature J: -25°C ~ -40°C
- Y:** Refrigerant Y: R404A / R448A / R449A

Product Description:

- ★ Widely used for huge refrigeration projects. Cooling temperature range @ -25°C ~ -40°C ;
- ★ Bitzer semi-hermetic screw compressor;
- ★ Danfoss, Emerson and other top quality components applied;
- ★ With all kinds of the protection devices: Wrong direction, Over heating, High discharging temperature, Low oil position, Oil leakage, High & low pressure and etc;
- ★ Economizer was equipped to enhance the cooling capacity at low evaporating temperature;
- ★ The multi-level energy adjusting device makes it possible to apply for different cooling capacity consumption.

www.Supcool.net

Supcool Refrigeration Equipment Factory

Single Compressor Units (Air Cooled)

Model	BLGF-50JY	BLGF-60JY	BLGF-70JY	BLGF-75JY	BLGF-125JY	BLGF-160JY		
Room Temperature (°C)	-25°C ~ -40°C							
Refrigerant	R404A / R448A / R449A							
Power Supply	380V/50Hz/3phase							
Compressor	Semi-hermetic Screw Compressor							
	Type Model Quantity	HSN6461-50 1	HSN7451-60 1	HSN7461-70 1	HSN7471-75 1	HSN8571-125 1	HSN8591-160 1	
Oil Cooler	Copper Tube and Aluminium fin							
	Type Fan Voltage (V) Fan Capacity (W)	380 250	380 250	380 250	380 250	380 250×2	380 800×2	
Capacity & Input	Eavp -35°C	Capacity (KW)	44.5	52.7	60.7	64.1	103.6	128.8
		Input (KW)	43.4	54.7	57.6	61.5	96.2	128.4
	Eavp -40°C	Capacity (KW)	35.6	41.7	48.4	51.5	82.8	102.5
		Input (KW)	41.5	53.4	55.6	59.1	92.2	122.7
	Eavp -45°C	Capacity (KW)	27.9	32.2	37.8	40.5	64.6	79.4
		Input (KW)	39.8	51.9	53.4	56.8	88.2	116.2
Pipe	Suction Pipe (mm)	φ54	φ76	φ76	φ76	φ108	φ108	
	Liquid Pipe (mm)	φ28	φ28	φ28	φ28	φ35	φ35	
	Discharge Pipe (mm)	φ42	φ54	φ54	φ54	φ76	φ76	
	Liquid in Pipe (mm)	φ28	φ35	φ35	φ35	φ42	φ42	
Overall Dimension	L (mm)	1750	1750	1750	1750	2150	2150	
	W (mm)	1250	1250	1250	1250	1400	1400	
	H (mm)	1640	1640	1640	1640	1870	1870	

Remarks: Condensing temperature at 45°C.

2-Compressors Rack Unit (Air Cooled)

Model	BLGF2-100JY	BLGF2-120JY	BLGF2-140JY	BLGF2-150JY	BLGF2-250JY	BLGF2-320JY		
Room Temperature (°C)	-25°C ~ -40°C							
Refrigerant	R404A / R448A / R449A							
Power Supply	380V/50Hz/3phase							
Compressor	Semi-hermetic Screw Compressor							
	Type Model Quantity	HSN6461-50 2	HSN7451-60 2	HSN7461-70 2	HSN7471-75 2	HSN8571-125 2	HSN8591-160 2	
Oil Cooler	Copper Tube and Aluminium fin							
	Type Fan Voltage (V) Fan Capacity (W)	380 250×2	380 250×2	380 250×2	380 800×2	380 800×2	380 800×4	
Capacity & Input	Eavp -35°C	Capacity (KW)	89.0	105.4	121.4	128.2	207.2	257.6
		Input (KW)	86.8	109.4	115.2	123.0	192.4	256.8
	Eavp -40°C	Capacity (KW)	71.2	83.4	96.8	103.0	165.6	205.0
		Input (KW)	83.0	106.8	111.2	118.2	184.4	245.0
	Eavp -45°C	Capacity (KW)	55.8	64.4	75.6	81.0	129.2	158.8
		Input (KW)	79.6	103.8	106.8	113.6	176.4	232.4
Pipe	Suction Pipe (mm)	φ108	φ108	φ108	φ108	φ159	φ159	
	Liquid Pipe (mm)	φ35	φ42	φ42	φ42	φ54	φ54	
	Discharge Pipe (mm)	φ76	φ76	φ76	φ76	φ108	φ108	
	Liquid in Pipe (mm)	φ42	φ54	φ54	φ54	φ54	φ54	
Overall Dimension	L (mm)	2650	2650	2650	2650	3450	3450	
	W (mm)	1880	1880	1880	1880	2020	2020	
	H (mm)	2100	2100	2100	2100	2300	2300	

Remarks: Condensing temperature at 45°C.

3-Compressors Rack Unit (Air Cooled)

Model	BLGF3-150JY	BLGF3-180JY	BLGF3-210JY	BLGF3-225JY	BLGF3-375JY		
Room Temperature (°C)	-25°C ~ -40°C						
Refrigerant	R404A / R448A / R449A						
Power Supply	380V/50Hz						
Compressor	Type	Semi-hermetic Screw Compressor					
	Model	HSN6461-50	HSN7451-60	HSN7461-70	HSN7471-75	HSN8571-125	
	Quantity	3	3	3	3		
Oil Cooler	Type	Copper Tube and Alu. fin					
	Fan Voltage (V)	380	380	380	380	380	
	Fan Capacity (W)	800×2	800×2	800×2	800×2	800×3	
Capacity & Input	Eavp -35°C	Capacity (KW)	133.5	158.1	182.1	192.3	314.7
		Input (KW)	130.2	164.1	172.8	184.5	288.6
	Eavp -40°C	Capacity (KW)	106.8	125.1	145.2	154.5	251.1
		Input (KW)	124.5	160.2	166.8	177.3	276.6
	Eavp -45°C	Capacity (KW)	83.7	96.6	113.4	121.5	195.6
		Input (KW)	119.4	155.7	160.2	170.4	264.6
Pipe	Suction Pipe (mm)	2×φ89	2×φ89	2×φ108	2×φ108	2×φ133	
	Liquid Pipe (mm)	φ42	φ42	φ42	φ54	φ54	
	Discharge Pipe (mm)	φ76	φ76	φ76	φ108	φ108	
	Liquid in Pipe (mm)	φ54	φ54	φ54	φ54	φ54	
Overall Dimension	L (mm)	3450	3450	3450	3450	4250	
	W (mm)	1900	1900	1900	1900	2020	
	H (mm)	2100	2100	2100	2100	2300	

Remarks: Condensing temperature at 45°C.

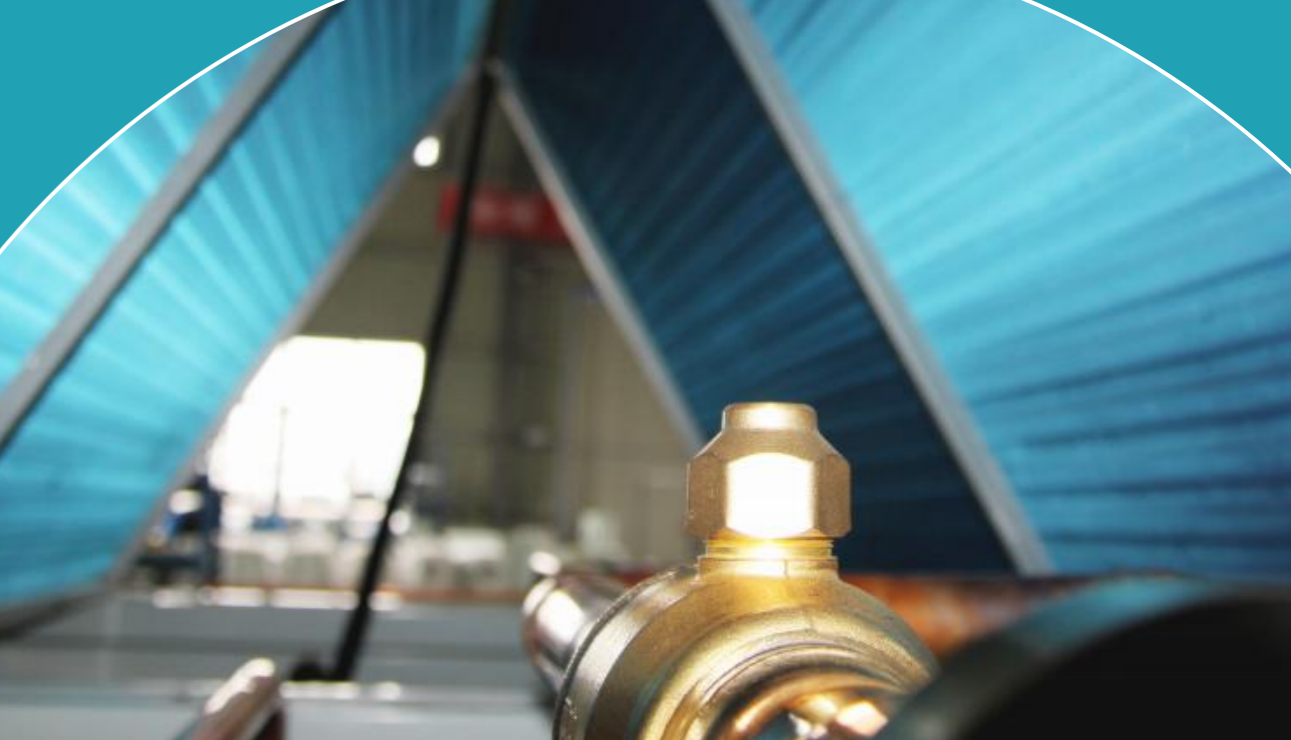
4-Compressors Rack Unit (Air Cooled)

Model	BLGF4-200JY	BLGF4-240JY	BLGF4-280JY	BLGF4-300JY		
Room Temperature (°C)	-25°C ~ -40°C					
Refrigerant	R404A / R448A / R449A					
Power Supply	380V/50Hz					
Compressor	Type	Semi-hermetic Screw Compressor				
	Model	HSN6461-50	HSN7451-60	HSN7461-70	HSN7471-75	
	Quantity	4	4	4	4	
Oil Cooler	Type	Copper Tube and Aluminium fin				
	Fan Voltage (V)	380	380	380	380	
	Fan Capacity (W)	800×2	250×4	250×4	250×4	
Capacity & Input	Eavp -35°C	Capacity (KW)	178.0	210.8	242.8	256.4
		Input (KW)	173.6	218.8	230.4	246.0
	Eavp -40°C	Capacity (KW)	142.4	166.8	193.6	206.0
		Input (KW)	166.0	213.6	222.4	236.4
	Eavp -45°C	Capacity (KW)	111.6	128.8	151.2	162.0
		Input (KW)	159.2	207.6	213.6	227.2
Pipe	Suction Pipe (mm)	3×φ89	3×φ89	3×φ108	3×φ108	
	Liquid Pipe (mm)	φ42	φ54	φ54	φ54	
	Discharge Pipe (mm)	φ76	φ108	φ108	φ108	
	Liquid in Pipe (mm)	φ54	φ54	φ54	φ54	
Overall Dimension	L (mm)	4250	4250	4250	4250	
	W (mm)	1900	1900	1900	1900	
	H (mm)	2100	2100	2100	2100	

Remarks: Condensing temperature at 45°C.



Creating The Best in Refrigeration
Comprehensive Refrigeration Solution Provider



Copeland® Open Pack Condensing Units



Supcool Refrigeration Equipment Factory

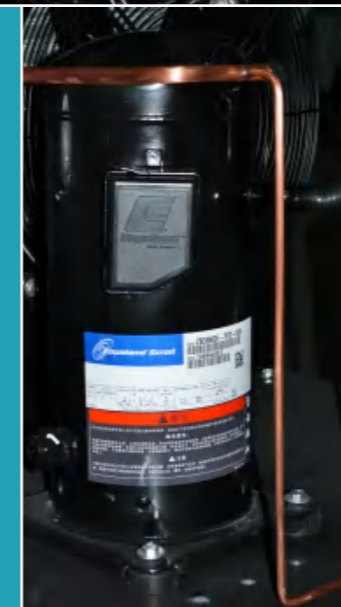
Nomenclature:

CD25/ZB26KQE

CD25 : [CD Air-cooled Condenser](#)
ZB26KQE : [Compressor Model](#)

Product Description:

- ★ Copeland scroll compressor;
- ★ Copper tube & aluminum fin type heat exchanger;
- ★ Low noise & high efficient Axial fan motor;
- ★ World famous brand refrigeration parts;
- ★ Use for widely application.



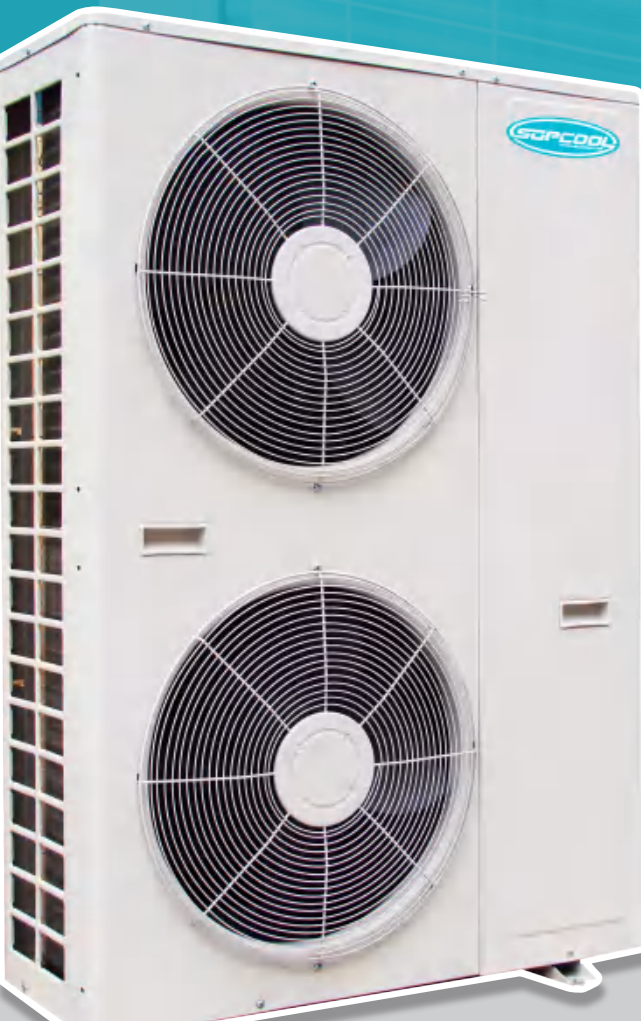
Air Cooled Middle & High Temperature Units

Model	CD15/ZB15KQE	CD22/ZB21KQE	CD33/ZB29KQE	CD43/ZB38KQE	CD48/ZB45KQE	CD55/ZB48KQE		
Temperature(°C)	-5°C ~ +5°C							
Refrigerant	R404A / R448A / R449A							
Power supply	380V / 3P / 50Hz							
Condenser	Fan Qty	1	1	2	2	2		
	Voltage (V)	380	380	380	380	380		
	Fan Dia. (mm)	1Xφ350	1Xφ400	2Xφ350	2Xφ400	2Xφ400	2Xφ400	
Cooling Capacity & Input	Evap -5°C	Capacity (W)	3820	5740	7840	9720	11450	13270
		Input (KW)	1.76	2.5	3.32	4.2	4.79	5.24
	Evap -15°C	Capacity (W)	3070	4680	6370	7910	9310	11047
		Input (KW)	1.82	2.51	3.35	4.2	4.81	5.27
	Evap -15°C	Capacity (W)	2430	3780	5120	6380	7510	9114
		Input (KW)	1.88	2.52	3.37	4.2	4.82	5.28
Pipe	Suction Pipe (mm)	19	19	19	19	19	19	
	Liquid Pipe (mm)	10	10	12	12	12	12	
Overall Dimension	A (mm)	780	780	1010	1120	1380	1380	
	B (mm)	700	730	780	780	830	830	
	C (mm)	750	780	720	880	860	910	

Air Cooled Middle & Low Temperature Units

Model	CD15/ZSI06KQE	CD22/ZSI09KQE	CD28/ZSI11KQE	CD36/ZSI15KQE	CD43/ZSI18KQE	CD55/ZSI21KQE		
Temperature(°C)	-25°C ~ -15°C							
Refrigerant	R404A / R448A / R449A							
Power supply	380V / 3P / 50Hz							
Condenser	Fan Qty	1	1	2	2	2		
	Voltage (V)	380	380	380	380	380		
	Fan Dia. (mm)	1Xφ350	1Xφ400	2Xφ350	2Xφ400	2Xφ400	2Xφ400	
Cooling Capacity & Input	Evap -20°C	Capacity (W)	2330	3240	4120	5930	7230	8060
		Input (KW)	1.79	2.25	2.63	3.59	4.44	4.9
	Evap -25°C	Capacity (W)	1880	2620	3340	4830	5910	6590
		Input (KW)	1.73	2.2	2.57	3.44	4.28	4.47
	Evap -30°C	Capacity (W)	1500	2070	2610	3790	4780	5350
		Input (KW)	1.66	2.12	2.44	3.3	4.17	4.95
Pipe	Suction Pipe (mm)	19	19	19	19	19	19	
	Liquid Pipe (mm)	10	10	10	10	10	10	
Overall Dimension	A (mm)	780	780	880	1010	1120	1380	
	B (mm)	700	730	780	780	780	830	
	C (mm)	750	780	800	880	880	910	

Copeland® SRQ Series Condensing Units with Housing



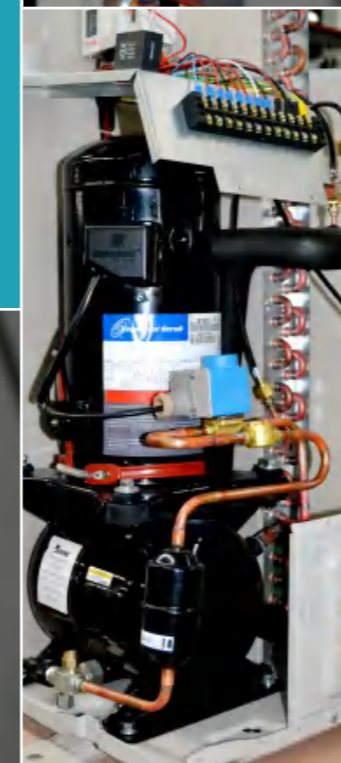
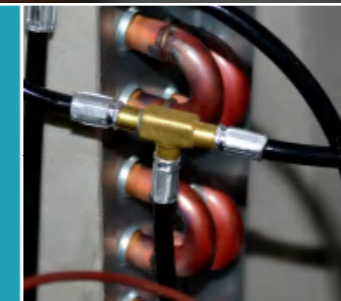
Nomenclature:

SRQ0MY

SQ : Series Name
05 : Compressor Nominal Power (HP)
M : Temp Range H: 5~15°C / M: -5~5°C / L: -18~35°C
Y : Refrigerant Y: R404A / R448A / R449A

Product Description:

- ★ Copeland Scroll Compressor and Electrical control inside;
- ★ All kinds of Coldroom control is available base on customer's requirement;
- ★ Condenser fan speed regulator;
- ★ Real-time operating parameter shown on the control panel;
- ★ With System Alarm Function.



Supcool Refrigeration Equipment Factory

Middle and High Temperature Series (Refrigerant R404A / R448A / R449A)

Model	SRQ02MY	SRQ03MY	SRQ04MY	SRQ05MY	SRQ06MY	SRQ07MY	SRQ08MY	SRQ09MY	SRQ10MY	SRQ13MY	SRQ15MY	
Room Temperature	-15°C ~ +5°C											
Refrigerant	R404A / R448A / R449A											
Power Supply	380V/3Ph/50 HZ											
Compressor Model	ZB15KQE	ZB21KQE	ZB29KQE	ZB38KQE	ZB45KQE	ZB48KQE	ZB58KQE	ZB66KQE	ZB76KQE	ZB95KQE	ZB114KQE	
Condenser	Fan Qty	1	1	1	2	2	2	1	1	1	2	
	Fan Voltage (V)	220	220	220	220	220	220	380	380	380	380	
	Fan Input (W)	120	120	120	120×2	120×2	120×2	550	550	550	380×2	
Cooling Capacity & Input	Evap -5°C	Capacity (W)	3820	5740	7840	9720	11450	13270	15250	17150	20300	25000
		Input (KW)	1.76	2.5	3.32	4.2	4.79	5.24	6.32	7.09	8.2	10.5
	Evap -10°C	Capacity (W)	3070	4680	6370	7910	9310	11047	12350	14000	16600	20000
		Input (KW)	1.82	2.51	3.35	4.2	4.81	5.26	6.31	7.08	8.2	10.5
	Evap -15°C	Capacity (W)	2430	3780	5120	6380	7510	9114	9750	11300	13350	16000
		Input (KW)	1.88	2.52	3.37	4.2	4.82	5.27	6.31	7.06	8.1	10.5
Evap -20°C	Capacity (W)	1860	3010	4070	5090	6000	7442	7420	8990	10550	12200	
	Input (KW)	1.93	2.52	3.39	4.19	4.81	5.28	6.31	7.03	8.0	10.6	
Pipe	Suction Pipe (mm)	φ19	φ19	φ19	φ19	φ19	φ19	φ28	φ28	φ28	φ28	
	Liquid Pipe (mm)	φ10	φ10	φ12	φ12	φ12	φ12	φ16	φ16	φ16	φ16	
Overall Dimension	L (mm)	1020	1020	1020	1020	1020	1020	967	1020	1020	1020	
	W (mm)	420	420	420	420	420	420	825	420	420	420	
	H (mm)	840	840	840	1240	1240	1240	1035	840	840	1240	
Instal Sizes (a×b) (mm)	580×380	580×380	580×380	580×380	580×380	580×380	570×785	570×785	570×785	900×785	900×785	

Remarks: 1. Cooling capacity at condensing Temp. 45°C ; 2. 220V/50Hz power is available for 2HP~4HP units; 3. The matched evaporators for these units should be equipped with 220V single phase fan motor.

Low Temperature Series (Refrigerant R404A / R448A / R449A)

Model	SRQ02LY	SRQ03LY	SRQ04LY	SRQ05LY	SRQ06LY	SRQ08LY	
Room Temperature	-20°C ~ -15°C						
Refrigerant	R404A / R448A / R449A						
Power Supply	380V/3Ph/50 HZ						
Compressor Model	ZSI06KQE	ZSI09KQE	ZSI11KQE	ZSI15KQE	ZSI18KQE	ZSI21KQE	
Condenser	Fan Qty	1	1	1	2	2	
	Fan Voltage (V)	220	220	220	220	220	
	Fan Input (W)	60	60	60	2X60	2X60	
Cooling Capacity & Input	Evap -20°C	Capacity (W)	2330	3240	4120	5930	8060
		Input (KW)	1.79	2.25	2.63	3.59	4.44
	Evap -25°C	Capacity (W)	1880	2620	3340	4830	5910
		Input (KW)	1.73	2.2	2.57	3.44	4.28
	Evap -30°C	Capacity (W)	1500	2070	2610	3790	4780
		Input (KW)	1.66	2.12	2.44	3.3	4.17
Pipe	Suction Pipe (mm)	φ19	φ19	φ19	φ19	φ19	
	Liquid Pipe (mm)	φ10	φ10	φ10	φ10	φ10	
Overall Dimension	L (mm)	1020	1020	1020	1020	1020	
	W (mm)	420	420	420	420	420	
	H (mm)	840	840	840	840	840	
Instal Sizes (a×b) (mm)	580X380	580X380	580X380	580X380	580X380	580X380	

Remarks: 1. Cooling capacity at condensing Temp 45°C ; 2. 220V/50HZ power is available for 2HP~4HP; 3. The matched evaporators for these units should be equipped with 220V single phase fan motor.

Copeland®

SRW Condensing Units with Housing & Control



Nomenclature:

SRW03MGY

SRW : Series Code

03 : Compressor Nominal Capacity:(HP)

M : Temperature M: -5 ~ +5°C , L: -20 ~ -15°C

G : Compressor T: Tecumseh, G: Copeland

Y : Refrigerant Y: for R404A / R448A / R449A

Product Description:

- ★ Copeland, Tecumseh compressor inside;
- ★ Compact housing construction for easy installation;
- ★ High efficient and low noise 6-pole condenser fan motor;
- ★ Condensing fan motor control available for dual-fans unit;
- ★ World famous refrigeration components;
- ★ Multi protection functions are available.



Supcool Refrigeration Equipment Factory



Tecumseh Compressor High Temperature Unit

Model	SRW0.6MTY	SRW01MTY	SRW1.7MTY	SRW02MTY	SRW03MTY		
Room Temperature	-5 ~ +5°C						
Refrigerant	R404A / R448A / R449A						
Power Supply	220V/50HZ	220V/50HZ	220V/50HZ	380V/50HZ	380V/50HZ		
Compressor	Hermetic Compressor						
	Model	CAJ9480Z	CAJ9510Z	CAJ4519Z	TFH4524Z	TFH4531Z	
	Max Current (A)	6.6	8.0	15.4	6.3	8.2	
Condenser	Fan Number	1	1	1	1	1	
	Air Flow (m³/h)	1700	1700	1700	3200	3200	
	Fan Power (W)	80	80	80	100	100	
	Fan Voltage	220V/50HZ					
Cap. & Input	Evap -0°C	Cap (W)	1874	2310	4070	4830	6143
		Input (W)	820	980	1850	2090	2610
	Evap -5°C	Cap (W)	1553	1924	3340	3890	4990
		Input (W)	760	910	1720	1920	2385
	Evap -10°C	Cap (W)	1266	1572	2700	3050	3970
		Input (W)	700	840	1590	1740	2150
Pipe	Suction Pipe (inch)	1/2" SAE	5/8" SAE	5/8" SAE	5/8" SAE	7/8" SAE	
	Liquid Pipe (inch)	3/8" SAE	3/8" SAE	3/8" SAE	3/8" SAE	3/8" SAE	

Remarks: Condensing temp: 45°C.

Tecumseh Compressor Low Temperature Unit

Model	SRW01LTY	SRW1.5LTY	SRW02LTY	SRW03LTY		
Room Temperature	-15°C ~ -20°C					
Refrigerant	R404A / R448A / R449A					
Power Supply	220V/50HZ	220V/50HZ	380V/50HZ	380V/50HZ		
Compressor	Hermetic Compressor					
	Model	CAJ2446Z	CAJ2464Z	TFH2480Z	TFH2511Z	
	Max Current (A)	7.9	10.0	4.8	5.0	
Condenser	Fan number	1	1	1	1	
	Air Flow (m³/h)	1700	1700	3200	4600	
	Fan Power (W)	80	80	100	100	
	Fan Voltage	220V/50HZ				
Cap. & Input	Evap -20°C	Cap (W)	1296	1673	2416	3348
		Input (W)	950	1250	1837	2312
	Evap -25°C	Cap (W)	1005	1300	1865	2518
		Input (W)	837	1100	1585	1960
	Evap -30°C	Cap (W)	755	990	1347	1817
		Input (W)	723	955	1326	1635
Pipe	Suction Pipe (inch)	1/2" SAE	5/8" SAE	5/8" SAE	5/8" SAE	
	Liquid Pipe (inch)	3/8" SAE	3/8" SAE	3/8" SAE	3/8" SAE	

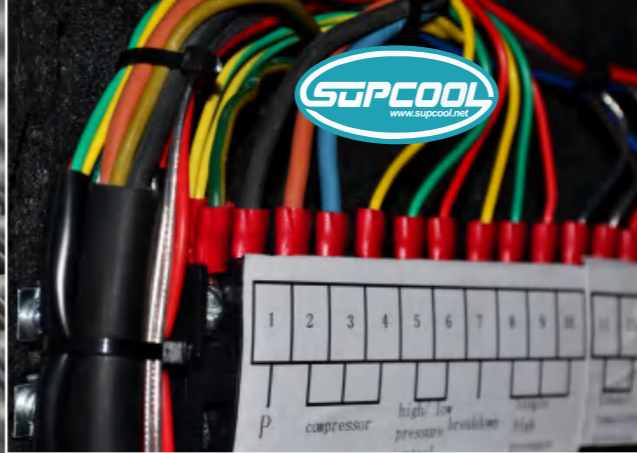
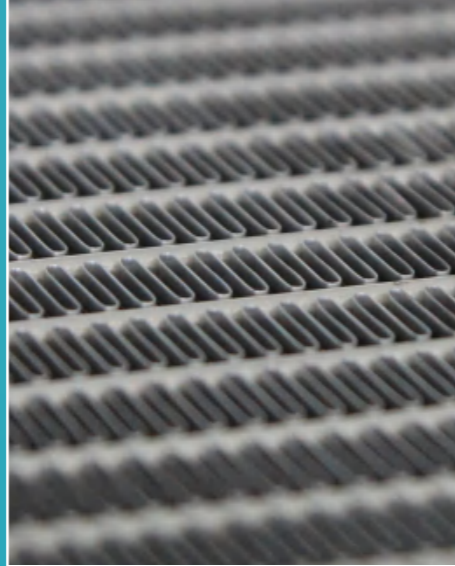
Remarks: Cooling capacity at condensing temp 45°C

Copeland ZB Scroll Compressor Unit

Model	SRW02MGY	SRW03MGY	SRW04MGY	SRW05MGY	SRW06MGY	SRW07MGY	SRW08MGY		
Room Temperature	-15°C ~ -5°C								
Refrigerant	R404A / R448A / R449A								
Power Supply	380V/50 HZ								
Compressor	Scroll Compressor								
	Model	ZB15KQE	ZB21KQE	ZB29KQE	ZB38KQE	ZB45KQE	ZB48KQE	ZB58KQE	
	Max Current (A)	6.0	8.0	11.0	13.5	16.1	17.0	23.0	
Condenser	Fan Number	1	1	2	2	2	2	2	
	Air Flow (m³/h)	3200	4600	6400	9200	9200	10580	10580	
	Fan Power (W)	100	160	2×100	2×160	2×160	2×230	2×230	
	Fan Voltage	220V/50HZ							
Cap. & Input	Evap -0°C	Cap (W)	4760	7000	9480	11950	14000	15300	18600
		Input (W)	1720	2480	3300	4150	4700	5170	6400
	Evap -5°C	Cap (W)	3820	5740	7800	9830	11500	12550	15300
		Input (W)	1760	2500	3300	4200	4730	5210	6360
	Evap -10°C	Cap (W)	3080	4680	6360	8000	9380	10200	12400
		Input (W)	1820	2510	3330	4200	4750	5230	6320
	Evap -15°C	Cap (W)	2430	3780	5130	6480	7580	8180	9840
		Input (W)	1880	2510	3330	4210	4760	5240	6320
	Evap -20°C	Cap (W)	1870	3020	4100	5170	6050	6500	7520
		Input (W)	1930	2520	3340	4210	4770	5240	6360
	Pipe	Suction Pipe (inch)	3/4" SAE	3/4" SAE	7/8" SAE	7/8" SAE	7/8" SAE	7/8" ODF	1-1/8" ODF
		Liquid Pipe (inch)	3/8" SAE	3/8" SAE	1/2" SAE	1/2" SAE	1/2" SAE	5/8" ODF	5/8" ODF

Remarks: Cooling capacity at condensing temp 45°C

Danfoss® Compressor Units with Microchannel Condenser



Nomenclature:

MMS06Z

M: Temperature M: -18°C ~ +5°C

MS: Micro-channel Condenser with Horizontal Air Discharge Housing

06: Compressor nominal capacity:(HP)

Z: Refrigerant Y: for R404A / R448A / R449A

Product Description:

- ★ Danfoss scroll compressor;
- ★ High efficient micro-channel condenser;
- ★ Low noise & High efficient axial fan motor;
- ★ Original Danfoss refrigeration components;
- ★ Extraordinary cost-effectiveness performance.



Supcool Refrigeration Equipment Factory

Tecumseh Compressor High Temperature Unit

Model	MMS02Z	MMS03Z	MMS04Z	MMS05Z	MMS06Z	MMS07Z	MMS08Z	MMS09Z	MMS10Z	
Temperature (°C)	-18°C ~ +5°C									
Refrigerant	R404A / R448A / R449A									
Power Supply	380V/3P/50HZ									
Compressor	MLZ015T4	MLZ021T4	MLZ030T4	MLZ038T4	MLZ045T4	MLZ048T4	MLZ058T4	MLZ066T4	MLZ076T4	
Condenser Fan	Fan Qty	1* φ 450	1* φ 450	1* φ 450	1* φ 450	2* φ 400	2* φ 400	2* φ 450	2* φ 450	2* φ 450
	Air Flow (m³/h)	4500	4500	4500	4500	7490	7490	9000	9000	9000
	Fan Voltage	220V/50HZ								
Evap 0°C	Cooling Capacity (W)	4560	6231	9439	11495	13386	14899	18810	21240	24480
	Input (kw)	1.95	2.5	3.6	4.3	5.1	5.57	5.96	6.76	7.66
Evap -10°C	Cooling Capacity (w)	3130	4324	6556	7943	9541	10323	12870	14850	17190
	Input (kw)	1.85	2.48	3.5	4.21	5.02	5.48	5.96	6.56	7.46
Cap. & Input Evap -15°C	Cooling Capacity (W)	2538	3705	5382	6394	7932	8601	10440	12240	14310
	Input (kw)	1.82	2.45	3.45	4.18	4.95	5.42	5.96	6.56	7.46
Evap -20°C	Cooling capacity (W)	1995	3040	4512	5367	6370	6975	8370	10080	11790
	Input (kw)	1.8	2.42	3.4	4.15	4.9	5.35	5.96	6.46	7.36
Evap -25°C	Cooling Capacity (W)	1581	2500	3657	4230	5320	5605	6840	8100	9540
	Input (kw)	1.75	2.4	3.37	4.1	4.87	5.3	5.86	6.46	7.36
Pipe	Gas (inch)	5/8	5/8	3/4	3/4	3/4	3/4	1-1/8	1-1/8	1-1/8
	Liquid (inch)	3/8	3/8	3/8	1/2	1/2	1/2	1/2	1/2	1/2
Dimension (mm)	1300×560×890	1300×560×890	1300×560×890	1300×560×890	1300×560×990	1300×560×990	1300×560×1100	1300×560×1100	1300×560×1100	

Remarks: Condensing temp: 45°C

Copeland®

Scroll Compressor Unit with Electrical Control



Supcool Refrigeration Equipment Factory



Nomenclature:

MCSD-02Z

M: Temperature M: -5 ~ +5°C, L: -20 ~ -15°C

CS: CU/AL Condenser with Horizontal Air Discharge housing

D: Compressor Type D: Danfoss; G: Copeland

02: HP

Z: Refrigerant Z: for R404A/R448A/R449A

Product Description:

- ★ Traditional CU/AL Condenser;
- ★ Low Noise/High Efficient Axial Fan Motor;
- ★ Original Danfoss/Copeland/Highly Refrigeration Components;
- ★ Extraordinary Cost-Effectiveness Performance.
- ★ Electrical control inside.



Copeland Packed Unit (Horizontal Discharge)

Model	MCSG-02Z	MCSG-03Z	MCSG-04Z	MCSG-05Z	MCSG-06Z	MCSG-07Z
Room Temperature (°C)	-15°C ~ +5°C					
Refrigerant	R404A / R448A / R449A					
Power Supply	380V/3P/50HZ					
Compressor	ZB15KQE	ZB21KQE	ZB29KQE	ZB38KQE	ZB45KQE	ZB48KQE
Condenser Fan	Fan Qty	1 X Φ450	1 X Φ450	2 X Φ400	2 X Φ400	2 X Φ400
	Fan Voltage	220V/1P/50HZ 6poles				
Condenser	Heat Exchange Area (m²)	21	30.3	37.2	45.5	59.2
	Condensing Capacity (kw)	5.6	8	9.9	12.1	14.4
	Fin Space (mm)	2	2	2	2	2
Evap -5°C	Cooling Capacity (W)	3820	5740	7840	9720	11450
	Lnput (kw)	1.76	2.5	3.32	4.2	4.79
Evap -10°C	Cooling Capacity (W)	3070	4680	6370	7910	9310
	Lnput (kw)	1.82	2.51	3.35	4.2	4.81
Evap -15°C	Cooling Capacity (W)	2430	3780	5120	6380	7510
	Lnput (kw)	1.88	2.52	3.37	4.2	4.82
Evap -20°C	Cooling Capacity (W)	1860	3010	4070	5090	6000
	Lnput (kw)	1.93	2.52	3.39	4.19	4.81
Pipe	Gas (inch)	3/4	3/4	7/8	7/8	7/8
	Liquid (inch)	3/8	1/2	1/2	1/2	1/2
Dimension (mm)	1300x560x690	1300x560x690	1300x560x990	1300x560x990	1300x560x990	1300x560x990

Condensing temp:45°C

Copeland Packed Unit (Horizontal Discharge)

Model	LCSG-02Z	LCSG-03Z	LCSG-04Z	LCSG-05Z	LCSG-06Z	LCSG-07Z
Room Temperature (°C)	-25°C ~ -10°C					
Refrigerant	R404A / R448A / R449A					
Power Supply	380V/3P/50HZ					
Compressor	ZS106KQE	ZS109KQE	ZS111KQE	ZS115KQE	ZS118KQE	ZS121KQE
Condenser Fan	Fan Qty	1 X Φ450	1 X Φ450	2 X Φ400	2 X Φ400	2 X Φ400
	Air Flow(m³/h)	220V/1P/50HZ 6poles				
Condenser	Heat Exchange Area (m²)	21	30.3	37.2	45.5	59.2
	Condensing Capacity (kw)	5.6	8	9.9	12.1	14.4
	Fin Space (mm)	2	2	2	2	2
Evap -20°C	Cooling Capacity (W)	2330	3240	4120	5930	7230
	Lnput (kw)	1.79	2.25	2.63	3.59	4.44
Evap -25°C	Cooling Capacity (W)	1880	2620	3340	4830	5910
	Lnput (kw)	1.73	2.2	2.57	3.44	4.28
Evap -30°C	Cooling Capacity (W)	1500	2070	2610	3790	4780
	Lnput (kw)	1.66	2.12	2.44	3.3	4.17
Pipe	Gas (inch)	3/4	3/4	7/8	7/8	7/8
	Liquid (inch)	3/8	1/2	1/2	1/2	1/2
Dimension (mm)	1300x560x690	1300x560x690	1300x560x990	1300x560x990	1300x560x990	1300x560x990

Remarks: Condensing temp:45°C

Copeland Packed Unit (Vertical Discharge)

Model	MCSG08/U	MCSG10/U	MCSG13/U	MCSG15/U	MCSG20/V	MCSG25/V	MCSG30/V
Room Temperature (°C)	-15°C ~ +5°C						
Refrigerant	R404A / R448A / R449A						
Power Supply	380V/3P/50HZ						
Compressor	ZB58KQE	ZB76KQE	ZB95KQE	ZB114KQE	ZB130KQE	ZB190KQE	ZB220KQE
Condenser Fan	Fan Qty	1 X Φ550	2 X Φ500	2 X Φ500	2 X Φ550	2 X Φ630	2 X Φ700
	Input (W)	600	2 X 380	2 X 380	2 X 600	2 X 800	2 X 750
	Fan Voltage	380V/3P/50HZ 6poles					
Condenser	Heat Exchange Area (m²)	70	90	110	120	155	240
	Heat Exchange Capacity (W)	24640	30500	39050	42240	55025	82800
Evap -5°C	Cooling Capacity (W)	15224	20306	24843	29593	39264	72675
	Input (kw)	6.41	8.35	10.77	12.75	15.63	30.6
Evap -10°C	Cooling Capacity (W)	12588	14511	20591	24344	32737	60676
	Input (kw)	6.38	8.28	10.71	12.73	15.49	30.18
Evap -15°C	Cooling Capacity (W)	10213	13846	16673	19618	26932	51034
	Input (kw)	6.38	8.22	10.69	12.73	15.28	29.39
Evap -20°C	Cooling Capacity (W)	8004	11163	14060	16768	21698	43890
	Input (kw)	6.42	8.17	10.5	12.71	15	27.99
Pipe	Gas (inch)	7/8	7/8	7/8	1	1-1/8	1-1/4
	Liquid (inch)	5/8	5/8	5/8	3/4	3/4	7/8
Dimension (mm)	900x770x1000	1330x950x890	1480x950x990	1730x1050x1000	1600x1000x1650	1750x1000x1880	1900x1175x1980

Remarks: Condensing temp:45°C

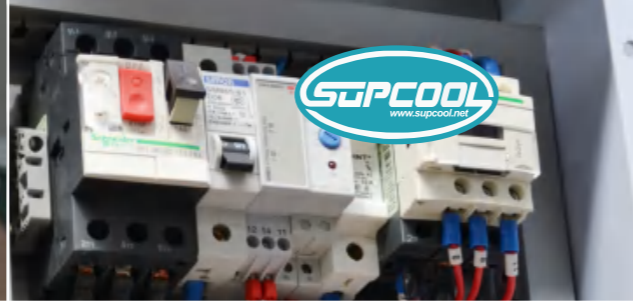
Danfoss Packed Unit (Horizontal Discharge)

Model	MCS02Z	MCS03Z	MCS04Z	MCS05Z	MCS06Z	MCS07Z
Room Temperature (°C)	-18°C ~ +5°C					
Refrigerant	R404A / R448A / R449A					
Power Supply	380V/3P/50HZ					
Compressor	MLZ015T4	MLZ021T4	MLZ030T4	MLZ038T4	MLZ045T4	MLZ048T4
Condenser Fan	Fan Qty	1 X Φ450	1 X Φ450	1 X Φ450	2 X Φ450	2 X Φ450
	Air Flow(m³/h)	4500	4500	4500	4500	7490
	Fan Voltage	220V/1P/50HZ 4poles				
Evap 0°C	Cooling Capacity (W)	4560	6231	9439	11495	13386
	Input (kw)	1.95	2.5	3.6	4.3	5.1
Evap -10°C	Cooling Capacity (W)	3130	4324	6556	7943	9541
	Input (kw)	1.85	2.48	3.5	4.21	5.02
Evap -15°C	Cooling Capacity (W)	2538	3705	5382	6394	7932
	Input (kw)	1.82	2.45	3.45	4.18	4.95
Evap -20°C	Cooling Capacity (W)	1995	3040	4512	5367	6370
	Input (kw)	1.8	2.42	3.4	4.15	4.9
Evap -25°C	Cooling Capacity (W)	1581	2500	3657	4230	5320
	Input (kw)	1.75	2.4	3.37	4.1	4.87
Pipe	Gas (inch)	3/4	3/4	7/8	7/8	7/8
	Liquid (inch)	3/8	1/2	1/2	1/2	1/2
Dimension (mm)	1100x475x610	1100x475x610	1100x475x1130	1100x475x1130	1100x475x1130	1100x475x1130

Remarks: Condensing temp:45°C

Supcool Refrigeration Equipment Factory

Highly[®] DH&BH Rotary Compressor Unit



Nomenclature:

LDH1.5Z

L: **Temperature** M: -15°C ~ -10°C / L: -30°C ~ -15°C

D: **Constant Frequency Compressor** B: Invert compressor

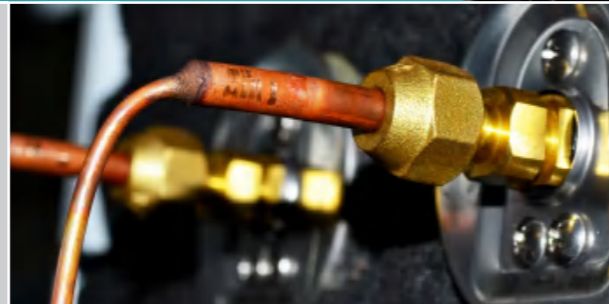
H: **Highly Rotary Compressor**

1.5: **HP**

Z: **Refrigerant** Z: for R404A/R410A/R448A/R449A

Product Description:

- ★ Adopt double - rotor process, vibration noise is very quiet;
- ★ With spray device technology, suitable for the special conditions of high pressure ratio of refrigeration. The evaporation temperature can be -40 ° c, effectively replacing the current high and medium temperature models of scroll compressor;
- ★ Equipped with a large capacity gas-liquid separator, effectively reduce the risk of liquid attack;
- ★ The unit adopts copper tube heat exchanger with internal thread, which has high heat transfer efficiency;
- ★ Dia 5mm inner groove copper tube and corrugated fin.



Supcool Refrigeration Equipment Factory

Castant Frequency Unit

Model	LDH1.5Z	LDH02Z	LDH03Z	LDH3.5Z	LDH04Z	LDH05Z	LDH65Z
Compressor Model	WHP05180DCV	DDH307LV	WHP09800DCV	DTH488LC3	DTH590LC3	DTE752LC3	WHP19460DC3
Power Supply	220V/1PH/50HZ	220V/1PH/50HZ	220V/1PH/50HZ	380V/3PH/50HZ	380V/3PH/50HZ	380V/3PH/50HZ	380V/3PH/50HZ
Cold Room Temperature (°C)	-30°C ~ +5°C						
Refrigerant	R404A / R410A / R448A / R449A						
Condenser	Heat Exchange Area	20 m ²	20 m ²	30 m ²	40 m ²	40 m ²	50 m ²
	Fan Qty *Dia (mm)	1 × φ 350	1 × φ 350	1 × φ 400	1 × φ 450	1 × φ 450	2 × φ 400
	Input (W)	1 × 94W	1 × 94W	1 × 120W	1 × 160W	1 × 120W	2 × 160W
	Air Flow (m ³ /h)	2410	2410	3290	4500	4500	6580
Evaporating Tempe -5°C	Cooling Capacity (W)	2923	3703	6276	6077	7609	9699
	Input (KW)	1.48	1.62	2.64	2.67	3.73	4.77
Evaporating Tempe -10°C	Cooling Capacity (W)	2425	3072	5206	5041	6270	7991
	Input (KW)	1.43	1.56	2.54	2.58	3.61	4.62
Evaporating Tempe -15°C	Cooling Capacity (W)	1990	2522	4272	4137	5111	6514
	Input (KW)	1.37	1.5	2.44	2.48	3.49	4.46
Evaporating Tempe -25°C	Cooling Capacity (W)	1291	1635	2771	2683	3292	4196
	Input (KW)	1.26	1.38	2.24	2.27	3.24	4.15
Evaporating Tempe -35°C	Cooling Capacity (W)	787	997	1400	1636	2070	2638
	Input (KW)	1.16	1.27	2.1	2.09	3.01	3.85
Evaporating Tempe -40°C	Cooling Capacity (W)	596	755	1280	1240	1655	2110
	Input (KW)	1.12	1.22	1.99	1.65	2.91	3.72
Pipe	Suction Inlet (mm)	5/8 "	5/8 "	5/8 "	5/8 "	5/8 "	3/4 "
	Liquid Dia (mm)	3/8 "	3/8 "	3/8 "	3/8 "	3/8 "	1/2 "
Overall Dimension L×W×H (mm)	825×360×660	825×360×660	975×360×810	1300×560×690	1300×560×990	975×360×1310	1175×360×1260

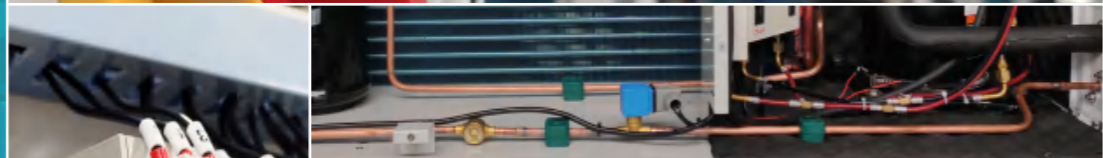
Test condition: Subcooling temp. 8.3K Return gas superheat temp. 25K Condensing Temp. +50°C

DC Inverter Compressor Unit

Model	MBH03Z	MBH04Z	MBH05Z	MBH06Z	MBH07Z	MBH08Z	MBH10Z	MBH12Z
Max Cooling Capacity	Evap -7°C (KW)	5.89	7.23	8.37	10.27	11.99	16.6	17.7
	Frequency (Hz)	70	85	70	85	85	85	85
Pipe	Suction Inlet (mm)	5/8 "	5/8 "	3/4"	3/4"	3/4"	7/8"	7/8"
	Liquid Dia (mm)	3/8 "	3/8 "	1/2"	1/2"	1/2"	5/8"	5/8"
Frequency Range (Hz)	15-70	15-85	15-70	15-85	15-85	30-85	30-85	30-85
Evaporating Temp Range (°C)	-15°C ~ +10°C							
Power supply (V)	220	220	220	220	220	380	380	380
Overall Dimension L×W×H (mm)	1115x473x868	1115x473x868	1115x473x1409	1115x473x1409	1115x473x1409	1115x473x1574	1115x473x1574	1115x473x1574
Model	LBH03Z	LBH04Z	LBH05Z	LBH06Z	LBH07Z	LBH08Z	LBH10Z	LBH12Z
Max Cooling Capacity	Evap -23°C (KW)	3.03	3.71	4.3	5.27	6.16	9.1	9.7
	Frequency (Hz)	70	85	70	85	85	85	85
Pipe	Suction Inlet (mm)	5/8 "	5/8 "	3/4"	3/4"	3/4"	7/8"	7/8"
	Liquid Dia (mm)	3/8 "	3/8 "	1/2"	1/2"	1/2"	5/8"	5/8"
Frequency Range (Hz)	15-70	15-85	15-70	15-85	15-85	30-85	30-85	30-85
Evaporating Temp Range (°C)	-30°C ~ -15°C							
Power supply (V)	220	220	220	220	220	380	380	380
Overall Dimension L×W×H (mm)	1115x473x868	1115x473x868	1115x473x1409	1115x473x1409	1115x473x1409	1115x473x1574	1115x473x1574	1115x473x1574

Copeland®

SUA Series Condensing Unit with Double-door



Nomenclature:

SUAD2MZ

SUA : Supcool New Generation Unit With Double Door

D : Compressor Type D: Danfoss / G: Copeland

Z : HP

M : Temperature M: -15 ~ +5°C, L: -20 ~ -15°C

Z : Z: for R404A / R448A / R449A

Product Description:

- ★ Traditional CU/AL Condenser;
- ★ Low Noise/High Efficient Axial Fan Motor;
- ★ Brand new design for double checking door;
- ★ Electrical control inside.



Supcool Refrigeration Equipment Factory

SUA Condensing Units with Danfoss Compressor

Model	SUAD02MZ	SUAD03MZ	SUAD04MZ	SUAD05MZ	SUAD06MZ	SUAD07MZ	SUAD08MZ	SUAD09MZ	SUAD10MZ
Room Temperature (°C)	-18°C ~ +5°C								
Refrigerant	R404A/R448A/R449A								
Power Supply	380V/3P/50HZ								
Compressor	MLZ015T4	MLZ021T4	MLZ030T4	MLZ038T4	MLZ045T4	MLZ048T4	MLZ058T4	MLZ066T4	MLZ076T4
Condenser Fan	Fan Qty	1 X Φ450	1 X Φ450	2 X Φ450	2 X Φ450	2 X Φ450	2 X Φ450	2 X Φ500	2 X Φ500
	Fan Voltage	220V/1P/50HZ 6poles							
Condenser	Heat Exchange Area (m ²)	20.75	29.75	37.75	44.5	54.6	58.5	71.4	83.5
	Condensing Capacity (kw)	5.4	7.74	9.82	11.57	14.2	15.21	18.56	21.71
	Fin Space (mm)	2	2	2	2	2	2	2	2
Evap -5°C	Cooling Capacity (W)	3788.82	5358.28	8076.22	9608.82	11717.6	12842.8	14899.2	17295.1
	Input (kw)	1.9	2.5	3.6	4.3	5.1	5.57	5.96	6.76
Evap -10°C	Cooling Capacity (W)	3069.08	4387.31	6573.69	7849.24	9516.67	10446.9	12057.1	13997.1
	Input (kw)	1.85	2.48	3.5	4.21	5.02	5.48	5.96	6.56
Evap -15°C	Cooling Capacity (W)	2443.43	3557.96	5297.17	6351.56	7645.54	8383.71	9596.21	11184.1
	Input (kw)	1.82	2.45	3.45	4.18	4.95	5.42	5.96	6.56
Evap -20°C	Cooling Capacity (W)	1895.38	2847.92	4216.59	5081.83	6056.68	6610.55	7458.33	8804.69
	Input (kw)	1.8	2.42	3.4	4.15	4.9	5.35	5.96	6.46
Evap -25°C	Cooling Capacity (W)	1406.5	2231.97	3304.79	4006.1	4711.29	5086.68	5600.78	6788.06
	Input (kw)	1.75	2.4	3.37	4.1	4.87	5.3	5.86	6.46
Pipe	Gas (inch)	3/4"	3/4"	7/8"	7/8"	7/8"	7/8"	5/8"	5/8"
	Liquid (inch)	3/8"	1/2"	1/2"	1/2"	1/2"	1/2"	1	1
Dimension (mm)	1370x650x870	1370x650x870	1370x650x1370	1370x650x1370	1370x650x1370	1370x650x1370	1370x650x1370	1370x650x1570	1370x650x1570

Remarks: Condensing temp:45°C

SUA Condensing Units with Copeland Compressor

Model	SUAG02MZ	SUAG03MZ	SUAG04MZ	SUAG05MZ	SUAG06MZ	SUAG07MZ	SUAG08MZ	SUAG09MZ	SUAG10MZ	
Room Temperature (°C)	-18°C ~ 0°C									
Refrigerant	R404A / R448A / R449A									
Power Supply	380V/3P/50HZ									
Compressor	ZB15KQE	ZB21KQE	ZB29KQE	ZB38KQE	ZB45KQE	ZB48KQE	ZB58KQE	ZB66KQE	ZB76KQE	
Condenser Fan	Fan Qty	1 X Φ450	1 X Φ450	2 X Φ450	2 X Φ450	2 X Φ450	2 X Φ450	2 X Φ500	2 X Φ500	
	Fan Voltage	220V/1P/50HZ 6poles								
Condenser	Heat Exchange Area (m²)	20.75	29.75	37.75	44.5	54.6	58.5	71.4	75.75	83.5
	Condensing Capacity (kw)	5.4	7.74	9.82	11.57	14.2	15.21	18.56	19.7	21.71
	Fin Space (mm)	2	2	2	2	2	2	2	2	2
Evap 0°C	Cooling Capacity (W)	4300	6550	8900	11200	13100	14400	17500	19450	23250
	Input (kw)	1.97	2.79	3.7	4.67	5.29	5.82	7.1	7.92	9.26
Evap -5°C	Cooling Capacity (W)	3600	5550	7450	9400	11000	12050	14600	16350	19500
	Input (kw)	2.03	2.81	3.73	4.7	5.32	5.86	7.09	7.9	9.21
Evap -10°C	Cooling Capacity (W)	2950	4550	6200	7800	9150	10050	1200	13650	16200
	Input (kw)	2.1	2.82	3.74	4.72	5.35	4.9	7.08	7.88	9.16
Evap -15°C	Cooling Capacity (W)	2400	3750	5100	6450	7550	8300	9650	11250	13250
	Input (kw)	2.18	2.83	3.75	4.74	5.36	5.9	7.12	7.85	9.12
Pipe	Gas (inch)	3/4"	3/4"	7/8"	7/8"	7/8"	7/8"	5/8"	5/8"	5/8"
	Liquid (inch)	3/8"	1/2"	1/2"	1/2"	1/2"	1/2"	1	1	1
Dimension (mm)	1370x650x870	1370x650x870	1370x650x1370	1370x650x1370	1370x650x1370	1370x650x1370	1370x650x1370	1370x650x1570	1370x650x1570	

Model	SUAG02LZ	SUAG03LZ	SUAG04LZ	SUAG05LZ	SUAG06LZ	SUAG07LZ	
Room Temperature (°C)	-25°C ~ -15°C						
Refrigerant	R404A / R448A / R449A						
Power Supply	380V/3P/50HZ						
Compressor	ZSI06KQE	ZSI09KQE	ZSI11KQE	ZSI15KQE	ZSI18KQE	ZSI21KQE	
Condenser Fan	Fan Qty	1 X Φ450	1 X Φ450	2 X Φ400	2 X Φ400	2 X Φ400	
	Fan Voltage	220V/1P/50HZ 6poles					
Condenser	Heat Exchange Area (m²)	21	30.3	37.2	45.5	54	59.2
	Condensing Capacity (kw)	5.6	8	9.9	12.1	14.4	15.7
	Fin Space (mm)	2	2	2	2	2	2
Evap -20°C	Cooling Capacity (W)	2330	3240	4120	5930	7230	8060
	Input (kw)	1.79	2.25	2.63	3.59	4.44	4.9
Evap -25°C	Cooling Capacity (W)	1880	2620	3340	4830	5910	6590
	Input (kw)	1.73	2.2	2.57	3.44	4.28	4.74
Evap -30°C	Cooling Capacity (W)	1500	2070	2610	3790	4780	5350
	Input (kw)	1.66	2.12	2.44	3.3	4.17	4.59
Pipe	Gas (inch)	3/4"	3/4"	7/8"	7/8"	7/8"	7/8"
	Liquid (inch)	3/8"	1/2"	1/2"	1/2"	1/2"	1/2"
Dimension (mm)	1370x650x870	1370x650x870	1370x650x1370	1370x650x1370	1370x650x1370	1370x650x1370	

Remarks: Condensing temp:45°C



Creating The Best in Refrigeration
Comprehensive Refrigeration Solution Provider

Mono-block Unit



Nomenclature:

SRM280MYP

SRM: **Highly Rotary Compressor Series**

280: **Nominal Power** 280 ÷ 100 = 2.8(HP)

M: **Temperature** M: +10~ -25°C, L: 0~ -40°C

Y: R448A/R449A

P: P: Wall mounted / T: Roof top mounted

Product Description:

- ★ With the compact body Monoblock unit is easy to be installed in the cold room;
- ★ Maneurop compressor, Tecumseh compressor or other famous brand compressor inside;
- ★ Top quality components equipped in the system to make sure the unit runs well all the time;
- ★ Comprehensive protection devices offer the over loading, sub-heating, lack of phase, hi-low pressure protection etc.



Supcool Refrigeration Equipment Factory

Wall Mounted Unit @ Medium/High Temperature

Model	SRM100MY-P	SRM150MY-P	SRM180MY-P	SRM280MY-P	SRM350MY-P	SRM350MY-P
Compressor	DSD145CV	WHP03900DCV	WHP05180DCV	WHP07140DCV	WHP09800DCV	DTH488LC3
Cooling Capacity (Kw)	1.55	2.09	2.74	3.95	5.56	5.37
Input (Kw)	1.03	1.32	1.83	2.71	3.57	3.47
Refrigerant	R404A / R448A / R449A					
Voltage	220V/50Hz/1ph	220V/50Hz/1ph	220V/50Hz/1ph	220V/50Hz/1ph	220V/50Hz/1ph	380V/50Hz/3ph
Evaporating Temperature	-25°C ~ +10°C					
Shape Dimension (mm)	520×375×680	520×375×680	630×425×720	970×425×720	970×425×720	970×425×720
Hole Dimension (mm)	490×400	490×400	600×450	940×450	940×450	940×450
Condensing Motor	Motor Power (W)	90	90	150	300	300
	Fan Diameter (mm)	300	300	350	350×2	350×2
Evaporating Motor	Motor Power (W)	90	90	150	300	300
	Fan Diameter (mm)	300	300	350	350×2	350×2
Defrost Type	Hot Gas					

Wall Mounted Unit @ Medium/Low Temperature

SRM180LY-P	SRM280LY-P	SRM350LY-P	SRM350LY-P
WHP05180DCV	WHP07140DCV	WHP09800DCV	DTH488LC3C9EU
1.54	2.28	3.31	3.22
1.73	2.52	3.14	2.99
R404A / R448A / R449A			
220V/50Hz/1ph	220V/50Hz/1ph	220V/50Hz/1ph	380V/50Hz/3ph
-40°C ~ 0°C			
630×425×720	970×425×7	970×425×7	970×425×7
600×450	940×450	940×450	940×450
150	300	300	300
350	350×2	350×2	350×2
150	300	300	300
350	350×2	350×2	350×2
Hot Gas			

Rooftop Mounted Unit @ Medium/High Temperature

Model	SRM100MY-T	SRM150MY-T	SRM180MY-T	SRM280MY-T	SRM350MY-T	SRM350MY-T
Compressor	DSD145CV	WHP03900DCV	WHP05180DCV	WHP07140DCV	WHP09800DCV	DTH488LC3
Cooling Capacity(kW)	1.55	2.09	2.74	3.95	5.56	5.37
Input (kW)	1.03	1.32	1.83	2.71	3.57	3.47
Refrigerant	R404A / R448A / R449A					
Voltage	220V/50Hz/1ph	220V/50Hz/1ph	220V/50Hz/1ph	220V/50Hz/1ph	220V/50Hz/1ph	380V/50Hz/3ph
Evaporating Temperature	-25°C ~ +10°C					
Shape Dimension (mm)	556×556×378	556×556×378	656×606×428	1006×606×528	1006×606×528	1006×606×528
Hole Dimension (mm)	500×480	500×480	600×540	950×540	950×540	950×540
Condensing Motor	Motor Power (W)	90	90	150	300	300
	Fan Diameter (mm)	300	300	350	350×2	350×2
Evaporating Motor	Motor Power (W)	90	90	150	300	300
	Fan Diameter (mm)	300	300	350	350×2	350×2
Defrost Type	Hot Gas					

Rooftop Mounted Unit @ Medium/Low Temperature

SRM180LY-T	SRM280LY-T	SRM350LY-T	SRM350LY-T
WHP05180DCV	WHP07140DCV	WHP09800DCV	DTH488LC3C9EU
1.54	2.28	3.31	3.22
1.73	2.52	2.54	2.39
R404A / R448A / R449A			
220V/50Hz/1ph	220V/50Hz/1ph	220V/50Hz/1ph	380V/50Hz/3ph
-40°C ~ 0°C			
656×606×428	1006×606×528	1006×606×528	1006×606×528
600×540	950×540	950×540	950×540
150	300	300	300
350	350×2	350×2	350×2
150	300	300	300
350	350×2	350×2	350×2
Hot Gas			

Wall Mounted Unit @ High Temperature

Model	SRJ33MY-P	SRJ50MY-P	SRJ63MY-P	SRJ100MY-P	SRJ125MY-P	SRJ175MY-P	SRJ200MY-P	SRJ275MY-P	SRJ350MY-P
Cooling Capacity (W)	530	810	1050	1560	2230	2950	3250	4400	5200
Input (KW)	0.68	0.85	1.1	1.3	1.75	2.52	2.61	3.33	4.20
Power Supply	220V/1ph/50Hz	220V/1ph/50Hz	220V/1ph/50Hz	220V/1ph/50Hz	220V/1ph/50Hz	220V/1ph/50Hz	220V/1ph/50Hz	380V/3ph/50Hz	380V/3ph/50Hz
Temp (°C)	-5°C ~ +5°C								
Cond.Fan (W)	1X75	1X75	1X75	1X80	1X80	1X155	1X155	2X80	2X80
Evap.Fan (W)	1X75	1X75	1X75	1X80	1X80	1X155	1X155	2X80	2X80
Over All Size (mm)	490x1000x730	490x1000x730	490x1000x730	620x1020x765	620x1020x765	800x1020x805	800x1020x805	1090x1020x805	1090x1020x805
Defrosting	Electric Defrosting								
Throttle Type	Expansion Valve								
Refrigerant	R404A / R448A / R449A								

Wall Mounted Unit @ Low Temperature

Model	SRJ50LY-P	SRJ63LY-P	SRJ100LY-P	SRJ150LY-P	SRJ200LY-P	SRJ300LY-P	SRJ400LY-P
Cooling Capacity (W)	550	660	750	1050	1580	2060	3100
Input (KW)	0.63	0.71	1.04	1.35	2.01	2.63	3.26
Power Supply	220V/1ph/50Hz	220V/1ph/50Hz	220V/1ph/50Hz	220V/1ph/50Hz	220V/1ph/50Hz	380V/3ph/50Hz	380V/3ph/50Hz
Temp (°C)	-20°C ~ -18°C						
Cond.Fan(W)	1X75	1X75	1X80	1X80	1X155	1X155	2X80
Evap.Fan(W)	1X75	1X75	1X80	1X80	1X155	1X155	2X80
Over All Size (mm)	490x1050x730	490x1050x730	620x1070x765	620x1070x765	800x1070x805	800x1070x805	1090x1070x805
Defrosting	Electric Defrosting						
Throttle Type	Expansion Valve						
Refrigerant	R404A / R448A / R449A						

Remarks: SRJ × MY-P --- Testing Evaporating temp: -7°C , Condensing temp: 45°C , SRJ × LY-P --- Evaporating temp: -25°C , Condensing temp: 45°C

Roof Top Unit @ High Temperature

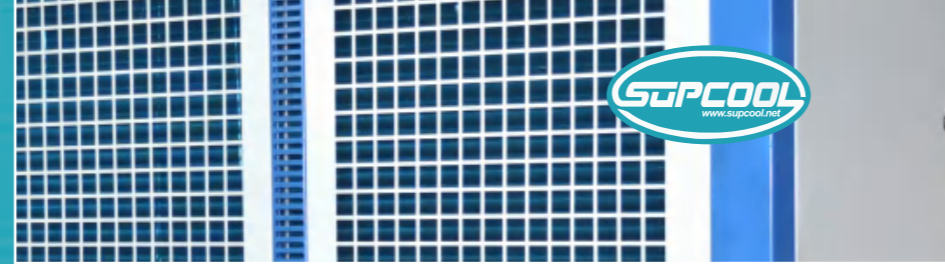
Model	SRJ50MY-T	SRJ63MY-T	SRJ100MY-T	SRJ125MY-T	SRJ175MY-T	SRJ275MY-T	SRJ350MY-T
Cooling Capacity (W)	810	1050	1560	2230	2950	4400	5200
Input (KW)	0.85	1.10	1.30	1.75	2.52	3.33	4.20
Power Supply	220V/1P/50Hz	220V/1P/50Hz	220V/1P/50Hz	220V/1P/50Hz	380V/3P/50Hz	380V/3P/50Hz	380V/3P/50Hz
Temperature	0°C ~ +5°C						
Cond. Fan (W)	1×75	1×75	1×80	1×80	1×80	2×80	2×80
Evap. Fan (W)	1×75	1×75	1×80	1×80	1×80	2×80	2×80
Over All Size (mm)	580x1031x371	580x1031x371	760x1251x471	760x1251x471	760x1251x471	1140x1251x471	1140x1251x471
Defrost Type	Hot Gas						
Throttle Type	Expansion Valve						
Refrigerant	R404A / R448A / R449A						

Roof Top unit @ Low temperature

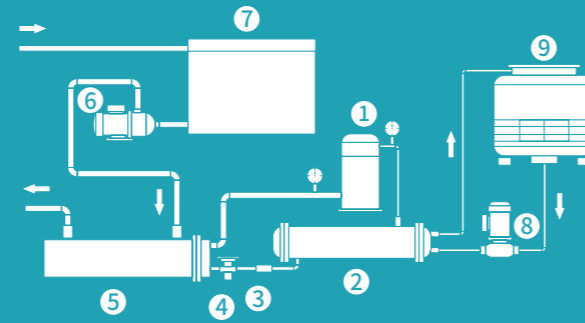
Model	SRJ50LY-T	SRJ200LY-T	SRJ300LY-T	SRJ150LY-T	SRJ200LY-T	SRJ300LY-T
Capacity (W)	550	660	750	1050	1580	2060
Input (KW)	0.63	0.71	1.04	1.35	2.01	2.63
Power Supply	220V/1P/50Hz	220V/1P/50Hz	220V/1P/50Hz	380V/3P/50Hz	380V/3P/50Hz	380V/3P/50Hz
Temperature	-18 ~ -20°C					
Condenser Fan (W)	1×75	1×75	1×80	1×80	1×80	2×80
Evaporator Fan (W)	1×75	1×75	1×80	1×80	1×80	2×80
Over All Size (mm)	580x1031x371	580x1031x371	760x1251x471	760x1251x471	760x1251x471	1140x1251x471
Defrost Type	Hot Gas					
Throttle Type	Expansion Valve					
Refrigerant	R404A / R448A / R449A					

Remarks: SRJ × MY-T--- Testing Evaporating temp: -7°C , Condensing temp: 45°C , SRJ × LY-T--- Testing Evaporating temp: -25°C , Condensing temp: 45°C

LSQ Series Water Chiller with Housing



- 1 Compressor
- 2 Condenser
- 3 Dry Filter
- 4 Expansion Valve
- 5 Evaporator
- 6 Chilled Water Pump
- 7 Water Vessel
- 8 Cooling Pump
- 9 Cooling Tower



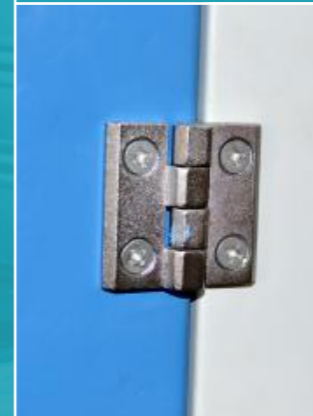
Nomenclature:

LSQ-03ASLZ

- LS: **Series Code**
 Q: **Compressor Type** Q: Hermetic
 03: **Compressor Power (HP)**
 A: **Air-Cooled**
 S: **Single System**
 L: **Temperature** L: low
 Z: **Refrigerant** Z: R404A / R448A / R449A

Product Description:

- ★ Hermetic scroll or piston compressor;
- ★ Built-in stainless steel tank with high efficient pump;
- ★ Pulley installed on bottom of unit for user convenience;
- ★ Controlled by microcomputer;
- ★ World famous brand refrigeration parts;
- ★ Comprehensive safety protection;
- ★ Use for widely application;



Medium and Low Temperature (Air-Cooled)

Model	LSQ-03ASLZ	LSQ-05ASLZ	LSQ-08ASLZ	LSQ-10ASLZ	LSQ-12ASLZ	LSQ-15ASLZ	LSQ-20ADLZ	LSQ-25ADLZ	LSQ-30ADLZ	
Temperature (°C)	-15°C									
Capacity	kw	3.6	5.2	6.9	11.2	13.2	15.5	22.4	26.4	31.0
	10 ³ kcal/h	3.1	4.5	5.9	9.6	11.4	13.3	19.3	22.7	26.7
Power (kw)	3.9	5.5	8.7	10.4	11.9	16.2	21.2	23.3	31.3	
Electric Current (A)	6.7	12.0	16.5	16.6	22.7	29.8	33.5	44.9	60.4	
Compressor	QTZ	1	1	1	1	1	2	2	2	
	Power (kw)	3.32	4.67	7.45	9.15	10.20	13.80	18.30	20.40	27.60
	Current (A)	5.40	10.20	13.56	13.70	19.40	24.80	27.40	38.80	49.60
Refrigerant	TZpe	R404A / R448A / R449A								
	Control Mode	Thermal Expansion Valve								
Fan	Power (kw)	0.23	0.25	0.50	0.50	0.90	0.90	1.40	1.40	2.7
	Current (A)	0.52	0.70	1.40	1.40	1.80	1.80	2.90	2.90	4.60
Pump	TZpe	Centrifugal Pump								
	Power (kw)	0.37	0.55	0.75	0.75	0.75	1.50	1.50	1.50	1.50
	Current (A)	0.75	1.10	1.50	1.50	1.50	3.20	3.20	3.20	3.20
	Pressure Head (m _{ice})	15	20	22	20	17	25	24	18	18
Condenser	Copper Tube & Aluminum Fin Tube Heat Exchanger									
Evaporator	Liquid Pipe (mm)	DN25	DN25	DN40	DN40	DN40	DN50	DN50	DN65	DN65
	Water Flow (L/min)	14.9	21.8	29.0	47.0	55.4	65.1	94.0	110.8	130.2
Water Tank	Volume (L)	75	75	125	125	145	230	240	325	365
	Fill,Discharge,Overfl	DN20								
Overall Size	L (mm)	1060	1060	1520	1620	1720	1810	2020	2270	2300
	W (mm)	770	770	850	850	900	975	1010	1150	1450
	H (mm)	1340	1450	1550	1600	1600	1730	1950	1990	1750
Weight (kg)	220	236	320	372	435	610	750	850	950	

D&N Series Air Coolers



Nomenclature:

LSQ-03ASLZ

D : Evaporator with Checking Door

D series:

1. Supcool classical design for evaporator with checking door;
2. Water defrosting is optional; Long distance air throw is optional.

N Series:

1. N series appearance is based on D series improvement;
2. The front panel improved with reinforced design to drop the noise during the running of our evaporator.

L : Application Temperature

L: -5°C ~ +5°C D: -15°C ~ -20°C J: Below -25°C

(S/L) : Vacancy: electrical defrosting & standard air throw

S: water defrosting;
C: Long distance air throw
(Basically increase 1-3m on same model)

29 : Cooling Capacity KW

45 : Dia.(cm) of Fan Motor

3 : Quantity of Fan Motors

A : A: 380V 3 Phase 50Hz B: 220V 1 Phase 50Hz

Product Description:

- ★ Power Painting Steel Body;
- ★ Defrosting with stainless steel electric heater;
- ★ Double layer drain plate keep the condensate water from frozen.



Supcool Refrigeration Equipment Factory

DL Chiller Room Air Cooler (Fin Space 4.5mm)

Model	DL2.2/311A	DL3.5/311A	DL4.7/312A	DL6/312A	DL9/352A	DL12.5/402A	DL14.5/402A	DL17/402A	DL25/502A
Capacity kw : T=7K T _e =7°C (R404A/R448A/R449A)	2.3	3.7	4.9	6.3	9.5	13.1	15.2	17.9	26.3
Heat Transfer Area (m ²)	7	11	14	26	35	43	52	61	87
Tube Cubage (C)	1.4	2.4	3.1	4.4	6.1	7.9	9.4	11	15.6
Air Flow (m ³ /h)	1500	1500	3000	3000	4500	7000	7000	7000	12000
Air Throw (m)	9	9	9	9	10	12	12	12	15
Fan Input (m)	90	90	180	180	280	390	390	390	1000
Defrosting (kw)	Coil	1.0	1.5	2.7	3.6	3.6	4.8	6	10.0
	Drain Plate	0.5	0.5	0.9	0.9	1.2	1.2	1.2	4.0
Pipe Dia (mm)	Liquid	φ12.7	φ12.7	φ12.7	φ12.7	φ16	φ16	φ16	φ22
	Gas	φ12.7	φ19	φ22	φ22	φ22	φ22	φ28	φ35

Model	DL29/453A	DL36.5/503A	DL42/503A	DL49/503A	DL59/504A	DL70/554A	DL84/554A	DL103/604A	DL112/634A	DL122/634A
Capacity kw : T=7K T _e =7°C (R404A/R448A/R449A)	30.5	38.3	44.1	51.5	62.0	73.5	88.2	108.2	117.6	128.1
Heat Transfer Area (m ²)	104	122	156	182	208	260	306	371	390	463
Tube Cubage (C)	19.1	22.4	25.6	32	38.7	45.1	58	70.9	77.3	83.7
Air Flow (m ³ /h)	13500	18000	18000	18000	24000	30000	30000	42000	46000	46000
Air Throw (m)	14	15	15	15	15	18	18	18	18	20
Fan Input (m)	840	1500	1500	1500	2000	3000	3000	3400	3520	3520
Defrosting (kw)	Coil	10.0	10.0	12.0	12.0	15.6	15.6	23.4	26	31.2
	Drain Plate	4.0	4.0	4.0	4.0	5.2	5.2	5.2	5.2	5.2
Pipe Dia (mm)	Liquid	φ22	φ22	φ22	φ22	φ22	φ22	φ28	φ35	φ35
	Gas	φ35	φ42	φ42	φ54	φ54	φ54	φ60	φ60	φ60

DD Freezer Room Air Cooler (Fin Space 6.0 mm)

Model	DD1.4/311A	DD2.3/311A	DD3/312A	DD4.5/312A	DD6/352A	DD7.5/402A	DD9/402A	DD11/402A	DD15.5/502A
Capacity kw : T=7K T _e =25°C (R404A/R448A/R449A)	1.5	2.4	3.2	4.7	6.3	7.9	9.5	11.6	16.3
Heat Transfer Area (m ²)	5.5	8.5	11	20	27	33	40	47	67
Tube Cubage (C)	1.4	2.4	3.1	4.4	6.1	7.9	9.4	11	15.6
Air Flow (m ³ /h)	1500	1500	3000	3000	4500	7000	7000	7000	12000
Air Throw (m)	9	9	9	9	10	12	12	12	15
Fan Input (W)	90	90	180	180	280	390	390	390	1000
Defrosting (kw)	Coil	1.0	1.5	2.7	3.6	3.6	4.8	6.0	7.5
	Drain Plate	0.5	0.5	0.9	0.9	1.2	1.2	1.2	3.0
Pipe Dia (mm)	Liquid	φ12.7	φ12.7	φ12.7	φ12.7	φ16	φ16	φ16	φ22
	Gas	φ12.7	φ19	φ22	φ22	φ22	φ22	φ28	φ35

Model	DD19/453A	DD24/503A	DD29/503A	DD32/503A	DD38/504A	DD47/554A	DD58/554A	DD72/604A	DD79/634A	DD88/634A
Capacity kw : T=7K T _e =25°C (R404A/R448A/R449A)	20	25.2	30.5	33.6	39.9	49.4	60.9	75.6	83	92.4
Heat Transfer Area (m ²)	80	94	120	140	160	200	235	285	300	356
Tube Cubage (C)	19.1	22.4	25.6	32	38.7	45.1	58	70.9	77.3	83.7
Air Flow (m ³ /h)	13500	18000	18000	18000	24000	30000	30000	42000	46000	46000
Air Throw (m)	14	15	15	15	15	18	18	18	18	20
Fan Input (W)	840	1500	1500	1500	2000	3000	3000	3400	3520	3520
Defrosting (kw)	Coil	10.0	10.0	12.0	12.0	15.6	15.6	23.4	26	31.2
	Drain Plate	4.0	4.0	4.0	4.0	5.2	5.2	5.2	5.2	5.2
Pipe Dia (mm)	Liquid	φ22	φ22	φ22	φ22	φ22	φ22	φ28	φ35	φ35
	Gas	φ35	φ42	φ42	φ54	φ54	φ54	φ60	φ60	φ60

DJ Blast Freezer Air Cooler (Fin Space 9.0mm)

Model	DJ1.7/311A	DJ2.2/312A	DJ2.7/312A	DJ4.2/352A	DJ5.6/402A	DJ6.8/402A	DJ7.8/402A	DJ11.5/502A	DJ14/453A
Capacity kw :T=7K T=-32°C (R404A/R448A/R449A)	1.8	2.3	2.8	4.4	5.9	7.1	8.2	12.1	14.7
Area (m ²)	6	8	14	19	23	28	33	47	56
Tube Cubage (C)	2.4	3.1	4.4	6.1	7.9	9.4	11	15.6	19.1
Air Flow (m ³ /h)	1500	3000	3000	4500	7000	7000	7000	12000	13500
Air Throw (m)	9	9	9	10	12	12	12	15	14
Fan Input (W)	90	180	90	280	390	390	390	1000	840
Defrosting (kw)	Coil	1.5	2.7	3.6	3.6	4.8	6.0	7.5	10.0
	Drain Plate	0.5	0.9	0.9	1.2	1.2	1.2	3.0	4.0
Pipe Dia (mm)	Liquid	φ12.7	φ12.7	φ12.7	φ16	φ16	φ16	φ22	φ22
	Gas	φ19	φ22	φ22	φ22	φ22	φ28	φ35	φ35

Model	DJ17/503A	DJ20/503A	DJ23/503A	DJ26/504A	DJ31/554A	DJ40/554A	DJ49/604A	DJ53.6/634A	DJ58/634A
Capacity kw :T=7K T=-32°C (R404A/R448A/R449A)	17.9	21	24.2	27.3	32.6	42	51.5	56	61
Area (m ²)	66	84	98	112	140	165	200	210	249
Tube Cubage (C)	22.4	25.6	32	38.7	45.1	58	70.9	77.3	83.7
Air Flow (m ³ /h)	18000	18000	18000	24000	30000	30000	42000	46000	46000
Air Throw (m)	15	15	15	15	18	18	18	18	20
Fan Input (W)	1500	1500	1500	2000	3000	3000	3400	3520	3520
Defrosting (kw)	Coil	10.0	12.0	12.0	15.6	15.6	26	31.2	33.8
	Drain Plate	4.0	4.0	4.0	5.2	5.2	5.2	5.2	5.2
Pipe Dia (mm)	Liquid	φ22	φ22	φ22	φ22	φ22	φ28	φ35	φ35
	Gas	φ42	φ42	φ54	φ54	φ54	φ60	φ60	φ60

NL Type Air Cooler (Fin Space 4.5mm)

Model	NL2.0/10	NL3.0/15	NL5.0/25	NL8.0/40	NL11.2/55	NL16.2/80	NL21.3/105	NL25.0/125
Capacity kw :T=7K T=-7°C (R404A/R448A/R449A)	2	3	5	8	11.2	16.2	21.3	25
Fan Motor	Quantity (pc)	1	2	3	2	2	2	3
	Dia. (mm)	350	350	350	400	500	500	500
	Input (W)	150	150	280	280	640	640	640
	Air Flow (m ³ /h)	3110	3110	5100	5100	8500	8500	8500
Defrost Heater (Kw)	2x0.5	2x0.9	2x1.2	3x1.3	3x1.3	3x1.3	3x1.5	3x1.9
Pipe Dia (mm)	Liquid (mm)	12	12	12	16	19	19	19
	Gas (mm)	16	16	16	25	38	38	38
Overall Dimension L×W×H (mm)	765×430×480	1165×430×480	1610×430×480	1590×530×560	1590×530×560	1890×590×660	1890×590×660	2370×590×660

Model	NL32.6/160	NL37.6/185	NL42.7/210	NL52.9/260	NL66.0/330	NL82.0/410	NL94.0/470	NL116/580
Capacity kw :T=7K T=-7°C (R404A/R448A/R449A)	32.6	37.6	42.7	52.9	66	82	94	116
Fan Motor	Quantity (pc)	3	4	4	4	4	3	3
	Dia. (mm)	500	500	500	550	600	710	710
	Input (W)	640	640	640	850	850	1100	1360
	Air Flow (m ³ /h)	8500	8500	8500	10500	10500	14500	19700
Defrost Heater (Kw)	3x2.4	3x2.4	3x2.6	4x2.6	5x2.6	5x2.8	6x2.4	6x2.6
Pipe Dia (mm)	Liquid (mm)	25	25	25	25	25	28	28
	Gas (mm)	50	50	50	50	50	50	50
Overall Dimension L×W×H (mm)	2390×590×660	3190×590×660	3590×590×660	3190×710×760	3390×710×760	3590×710×860	3090×810×960	3090×860×960

Remark: Coldroom temp. 0°C ; Δ T=8°C

ND Type Air Cooler (Fin Space 6.0mm)

Model	ND1.3/7	ND2.2/12	ND2.8/15	ND3.7/22	ND5.6/30	ND7.5/40	ND11.2/60	ND14.9/80
Capacity kw :T=7K T=-25°C (R404A/R448A/R449A)	1.3	2.2	2.8	3.7	5.6	7.5	11.2	14.9
Fan Motor	Quantity (pc)	1	2	2	3	2	2	2
	Dia. (mm)	350	350	350	350	400	500	500
	Input (W)	150	150	150	150	280	280	640
	Air Flow (m ³ /h)	3110	3110	3110	3110	5100	5100	8500
Defrost Heater (Kw)	3x0.5	3x0.9	3x0.9	3x1.2	3x1.5	3x1.5	6x1.3	6x1.5
Pipe Dia (mm)	Liquid (mm)	12	12	12	12	16	19	19
	Gas (mm)	16	16	16	16	25	38	38
Overall Dimension L×W×H (mm)	765×430×480	1165×430×480	1165×430×480	1610×430×480	1590×530×560	1590×530×560	1890×590×660	1890×590×660

Model	ND18.7/100	ND22.4/120	ND26.2/140	ND30.0/160	ND37.4/200	ND46.2/250	ND57.3/310	ND66.6/360	ND81.4/450
Capacity kw :T=7K T=-25°C (R404A/R448A/R449A)	18.7	22.4	26.2	30	37.4	46.2	57.3	66.6	81.4
Fan Motor	Quantity (pc)	3	3	4	4	4	4	3	3
	Dia. (mm)	500	500	500	500	550	600	710	710
	Input (W)	640	640	640	640	850	850	1360	1760
	Air Flow (m ³ /h)	8500	8500	8500	8500	10500	10500	14500	23500
Defrost Heater (Kw)	6x1.9	6x2.4	6x2.6	6x2.8	7x2.6	9x2.6	9x2.8	12x2.4	12x2.6
Pipe Dia (mm)	Liquid (mm)	19	25	25	25	25	25	28	28
	Gas (mm)	38	50	50	50	50	50	50	50
Overall Dimension L×W×H (mm)	2370×590×660	2390×590×660	3190×590×660	3590×590×660	3190×710×760	3390×710×760	3590×710×860	3090×810×960	3090×860×960

Remark: Coldroom temp. -18°C ; Δ T=7°C

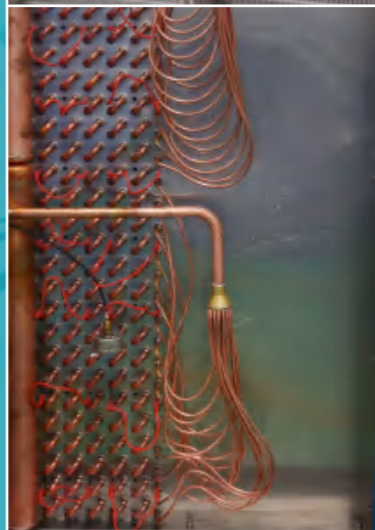
NJ Type Air Cooler (Fin Space 9.0mm)

Model	NJ1.2/8	NJ2.1/15	NJ3.6/20	NJ4.6/30	NJ7.1/40	NJ8.9/55	NJ11.6/70	NJ14.3/85
Capacity kw :T=7K T=-32°C (R404A/R448A/R449A)	1.2	2.1	3.6	4.6	7.1	8.9	11.6	14.3
Fan Motor	Quantity (pc)	2	3	2	2	2	3	3
	Dia. (mm)	350	350	350	400	400	500	500
	Input (W)	150	150	150	280	280	640	640
	Air Flow (m ³ /h)	3110	3110	5100	5100	8500	8500	8500
Defrost Heater (Kw)	3x0.9	3x1.2	3x1.5	3x1.5	6x1.3	6x1.5	6x1.9	6x2.4
Pipe Dia (mm)	Liquid (mm)	12	12	16	16	19	19	19
	Gas (mm)	16	16	25	25	38	38	38
Overall Dimension L×W×H (mm)	1165×430×480	1610×430×480	1590×530×560	1590×530×560	1890×590×660	1890×590×660	2370×590×660	2390×590×660

Model	NJ17.1/100	NJ19.6/115	NJ23.1/140	NJ28/170	NJ34.6/210	NJ41.2/250	NJ49.5/300
Capacity kw :T=7K T=-32°C (R404A/R448A/R449A)	17.1	19.6	23.1	28	34.6	41.2	49.5
Fan Motor	Quantity (pc)	4	4	4	4	4	3
	Dia. (mm)	500	500	550	550	600	710
	Input (W)	640	640	850	850	1100	1360
	Air Flow (m ³ /h)	8500	8500	10500	10500	14500	19700
Defrost Heater (Kw)	6x2.6	6x2.8	7x2.6	7x2.6	9x2.8	12x2.4	12x2.6
Pipe Dia (mm)	Liquid (mm)	25	25	25	25	25	28
	Gas (mm)	50	50	50	50	50	50
Overall Dimension L×W×H (mm)	3190×590×660	3590×590×660	3190×710×760	3390×710×760	3590×710×860	3090×810×960	3090×860×960

Remark: Coldroom temp. -25°C ; Δ T=6°C

Vertical Blast Freezing Air Cooler



Nomenclature:

VL36.3/506A

- V: Vertical Type Evaporator
- L: M: -15 ~ -20°C / L: Below -25°C
- 36.3: Cooling Capacity (KW)
- 506: Fan Motor Dia. 500mm x 6pcs
- A: 380V/50Hz/3phase

Product Description:

- ★ Very big diameter copper tube ϕ 16mm, Max fin space up to 10mm;
- ★ Benefited from the huge heat-transfer surface we have experiment shows that weight loss during the freezing of food reduced tremendously which proves our new design limit the dehumidification perfectly;
- ★ Due to the low frosting velocity, customers could save a lot from the power consumption;
- ★ Top quality axial fan motor could make sure that you have a low noise, stable and reliable evaporator;
- ★ Galvanized steel with powder painting body is very good against corrosion, of course that stainless steel is optional;
- ★ With vertical structure, installation could be very easy.

Supcool Refrigeration Equipment Factory

VM Air Cooler (Fin Space 6mm)

Model	VM36.9/504A	VM46.8/504A	VM56.1/506A	VM69.3/506A	VM50.1/554A	VM61.6/554A	VM71/556A	VM84.7/556A	VM60.5/634A	VM73.7/634A	VM89.1/636A	VM105.6/636A	
Cooling (kW)	36.9	46.8	56.1	69.3	50.1	61.6	71	84.7	60.5	73.7	89.1	105.6	
Heat Transfer Surface(m ²)	210	280	300	400	260	350	350	460	300	400	450	600	
Air Flow (m ³ /h)	24000	24000	36000	36000	32000	32000	48000	48000	40000	40000	60000	60000	
Air Throw (m)	16	14	16	14	18	16	18	16	20	18	20	18	
Input (kW)	2	2	3	3	3	3	4.5	4.5	3.52	3.52	5.28	5.28	
Defrost (kW)	16.5	22.5	22	30	22	30	22	30	24	32	24	32	
Overall Size(mm)	L	1935	1935	2535	2535	2295	2295	2535	2535	2295	2295	3195	3195
	W	824	924	824	924	824	924	824	924	824	924	824	924
	H	1685	1685	1685	1685	1685	1685	1685	1685	1885	1885	1885	1885
Pipe Diameter (mm)	Liquid	22	22	28	28	22	28	28	28	28	2X22	2X22	2X22
	Gas	54	54	60	60	54	60	60	60	60	2X54	2X54	2X60
Pipe Volume (L)	47.6	63.4	66.1	88.1	58.7	78.2	77.2	103	67.1	89.4	98.8	131.8	

Remarks: Fin space 6mm, nominal capacity at room temp: -18°C; Evaporation Temp: -25°C, DELTA T=7°C, R448/R449A

VL Air Cooler (Fin Space 10mm)

Model	VL18.7/504A	VL23.1/504A	VL27.5/506A	VL36.3/506A	VL25.3/554A	VL31.5/554A	VL35.2/556A	VL43.5/556A	VL30.3/634A	VL38/634A	VL45.1/636A	VL52.8/636A	
Cooling (kW)	18.7	23.1	27.5	36.3	25.3	31.5	35.2	43.5	30.3	38	45.1	52.8	
Heat Transfer Surface(m ²)	130	170	185	245	165	215	215	290	185	245	280	370	
Air Flow (m ³ /h)	24000	24000	36000	36000	32000	32000	48000	48000	40000	40000	60000	60000	
Air Throw (m)	16	14	16	14	18	16	18	16	20	18	20	18	
Input (kW)	2	2	3	3	3	3	4.5	4.5	3.52	3.52	5.28	5.28	
Defrost (kW)	16.5	22.5	22	30	22	30	22	30	24	32	24	32	
Overall Size(mm)	L	1935	1935	2535	2535	2295	2295	2535	2535	2295	2295	3195	3195
	W	824	924	824	924	824	924	824	924	824	924	824	924
	H	1685	1685	1685	1685	1685	1685	1685	1685	1885	1885	1885	1885
Pipe Diameter (mm)	Liquid	22	22	28	28	22	28	28	28	2X22	2X22	2X22	
	Gas	54	54	60	60	54	60	60	60	2-54	2-54	2-60	
Pipe Volume (L)	47.6	63.4	66.1	88.1	58.7	78.2	77.2	103	67.1	89.4	98.8	131.8	

Remarks: Fin space 10mm, nominal capacity at room temp: -33°C; Evaporation Temp: -40°C, DELTA T=7°C, R448/R449A

DHF Series Dual Discharge Evaporators

Nomenclature:

DHF-D80C

DHF: Series Code

D: Temp Range L: -5 ~ +5°C / D: -15 ~ -20°C

80: Heat Transfer Area m²

C: Generation Code

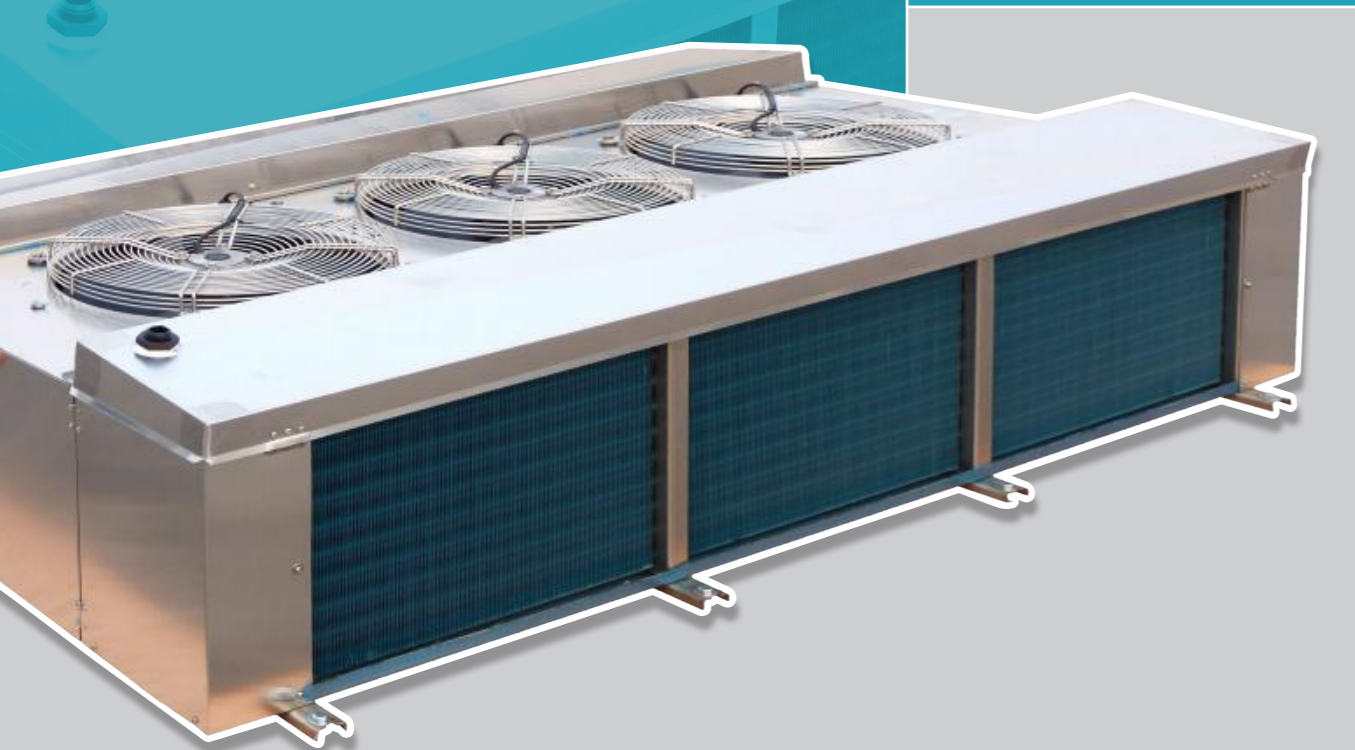
Product Description:

With the gentle wind discharged from each side, DHF range of dual discharge air cooler is good for applications of food process workshop. According to the different room temperature we have L group for 0°C and D for -18°C. All the products are anti-rusty, corrosion proof, and high reliability.

- ★ Powder painting galvanized steel body, Magnalium body is optional;
- ★ Defrosting with stainless steel electric heater.



Supcool Refrigeration Equipment Factory



Fin Space: 4.0mm

Model	DHF-L23C	DHF-L30C	DHF-L42C	DHF-L56C	DHF-L70C	DHF-L88C	DHF-L117C	DHF-L140C
Capacity (KW)	5.5	7.3	10.1	13.5	16.8	21.0	28.0	33.6
Area (m ²)	22.8	30.4	42.0	56.1	70.0	87.6	116.8	140.2
Tube Cubage (L)	2.5	3.4	4.4	5.9	7.2	8.9	11.7	14.0
Fan Motor	Air (m ³ /h)	4000	4000	8000	8000	12000	12000	16000
	Dia. (mm)	400	400	400	400	400	400	400
	Input (W)	1×195	1×195	2×195	2×195	3×195	3×195	4×195
	Voltage (V)	380	380	380	380	380	380	380
Defrost	Input (Kw)	4	8	12	12	12	12	12
	Voltage (V)	220	220	220	220	220	220	220

Remarks: Capacity test condition: cold room temperature: 2°C, DT: 8°C.

Fin space: 6.0mm

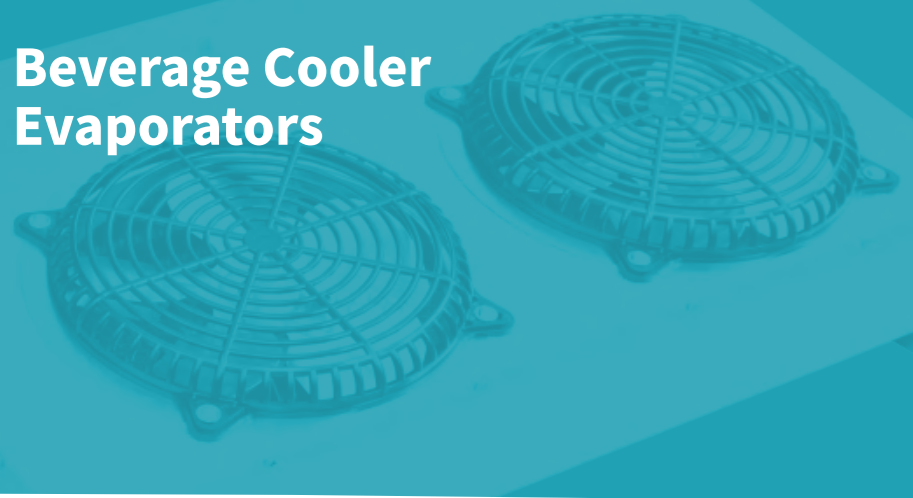
Model	DHF-D16C	DHF-D21C	DHF-D29C	DHF-D38C	DHF-D48C	DHF-D60C	DHF-D80C	DHF-D96C
Capacity (KW)	3.1	4.1	5.8	7.7	9.6	12.0	16.0	19.2
Area (m ²)	15.6	20.8	28.8	38.4	48.0	60.0	80.0	96.0
Tube Cubage (L)	2.5	3.4	4.4	5.9	7.2	9.5	10.6	14.0
Fan Motor	Air (m ³ /h)	4000	4000	8000	8000	12000	12000	16000
	Dia. (mm)	400	400	400	400	400	400	400
	Input (W)	1×195	1×195	2×195	2×195	3×195	3×195	4×195
	Voltage (V)	380	380	380	380	380	380	380
Defrost	Input (Kw)	4	8	12	12	15	15	15
	Voltage (V)	220	220	220	220	220	220	220

Remarks: Capacity test condition: cold room temperature: -18°C, DT: 8°C.

Overall Dimensions

Model	DHF-D16C DHF-L23C	DHF-D21C DHF-L30C	DHF-D29C DHF-L42C	DHF-D38C DHF-L56C	DHF-D48C DHF-L70C	DHF-D60C DHF-L88C	DHF-D80C DHF-L117C	DHF-D96C DHF-L140C
Overall Size (mm)	A	906	906	1256	1256	1756	1756	2255
	B	1042	1162	1162	1162	1162	1162	1162
	C	390	390	390	390	402	402	477
Top Install Size (mm)	D	990	1110	1110	1110	1110	1110	1110
	E	690	690	1040	1040	1540	1540	1540
	E1	—	—	—	—	500	500	500
	E2	—	—	—	—	500	500	500
	E3	—	—	—	—	—	—	500
	F	110	110	110	110	110	110	110
Connect Pipe (mm)	Inlet	φ12	φ12	φ16	φ16	φ16	φ16	φ22
	Outlet	φ22	φ22	φ28	φ35	φ35	φ35	φ42
Drainage Pipe Dia.	2×1"							

Beverage Cooler Evaporators



Supcool Refrigeration Equipment Factory



Nomenclature:

ESH500P

E : [Supcool 2020 New Design Evaporator For Beverage Cooler](#)

S : [The Quantity of Air Discharge](#)
S: Single air discharge / D: Double air discharge

H : [Fin Space&Room Temp](#)
H: Fin space 4mm, high temperature
L: Fin space 6mm, low temperature

500 : [Cooling Capacity: W](#)

P : [With Water Collected Drain Plate](#)

Product Description:

- ★ EV & DE series evaporator are of the products specially designed for the beverage cooler and display showcase which widely used for the supermarkets. It is applicable to freon refrigerator, suitable for 0-8°C ;
- ★ Cabinet of Al abd Mg alloy, corrosion proof and nice looking;
- ★ High heat transfer efficiency;
- ★ Ceiling mounted.

Model	EV-40	EV-60	EV-100	EV-130	EV-180	EV-290	EV-380
Capacity (KW)	0.3	0.4	0.63	0.85	1.28	1.76	2.2
Area (m ²)	1.4	2.3	2.4	3.8	4.8	7.7	9.4
Tube Cubage (L)	0.33	0.48	0.54	0.8	1.07	1.61	1.96
Fan Motor	Air flow(m ³ /h)	410	410	820	820	1230	1640
	Dia (mm)	200	200	200	200	200	200
	Input (W)	1×40	1×40	2×40	2×40	3×40	4×40
	Voltage (V)	220	220	220	220	220	220
Pipe Diameter (mm)	Inlet	9.52	9.52	9.52	9.52	12	12.7
	outlet	9.52	9.52	9.52	9.52	16	16
Electrical Defrosting	0.3	0.3	0.5	0.5	1.0	1.0	1.0
Overall Size (mm) (L×W×H)	410×152×435	410×152×435	610×152×435	610×152×435	1110×152×435	1110×152×435	1380×152×435
Drainage				1"			

Model	DE-0.45/2.5	DE-0.9/5.0	DE-1.35/7.5	DE-1.8/10.0
Capacity (KW)	0.45	0.9	1.35	1.8
Area (m ²)	2.5	5	7.5	10
Fan Motor	Quantity (pcs)	1	2	4
	Air Flow (m ³ /h)	400	2X400	3X400
	Dia (mm)	200	200	200
	Input (W)	1X40	2X40	3X40
	Voltage (V)	220	220	220
Overall Size (mm) (L×W×H)	435×390×150	745×390×150	1055×390×150	1365×390×150

Remarks: Capacity test condition: refrigerator temperature: 0°C , DT: 8°C

Model	ESH400	ESH500P	ESH630P	EDH600	EDH800
Cooling (KW)	0.4	0.5	0.63	0.6	0.8
Heat Transfer	2.3	2.3	3.2	3.4	4.6
Fin Space (mm)	4	4	4	4	4
Fan Motor	Qty	1	1	2	2
	Air flow (m ³ /h)	198	198	198	2X198
	Dia (mm)	48x290	48x290	48x290	48x290
	Input (W)	25.3	25.3	25.3	2x25.3
	Voltage (V)	220	220	220	220
Heater	Power (w)				
	Voltage (v)				

Fin Space: 4.0mm

Model	ESL300	ESL450P	ESL530P	EDL450	EDL600
Cooling (KW)	0.3	0.45	0.53	0.45	0.6
Heat Transfer	1.6	2.4	2.8	2.4	3.1
Fin Space (mm)	6	6	6	6	6
Fan Motor	Qty	1	1	2	2
	Air Flow (m ³ /h)	198	198	198	2X198
	Dia (mm)	48x290	48x290	48x290	48x290
	Input (W)	25.3	25.3	25.3	2x25.3
	Voltage (V)	220	220	220	220
Heater	Power (w)	350	350	350	350
	Voltage (v)	220	220	220	220

Fin Space: 6.0mm

Air Cooled Condenser



Nomenclature:

CDV72

CD : **Air Cooled Condenser**

V : **None For Standard Type**

V: V type condenser / G: Flat-plate Condenser

72 : **Heat Transfer Area(m²)**

Product Description:

- ★ With so many years experience of finned pack heat exchanger designing and manufacturing, Supcool provide the CD series air cooled condensers for all kinds of refrigeration system;
- ★ The optimal geometry and fins ripple make the condenser low flow drop, low airflow resistance, and low noise;
- ★ All of our products have been tested at 2.8MPa for the air leakage. R22, R134a, R404A, & R407C could run on these units.



Supcool Refrigeration Equipment Factory

CD Standard Condenser

Model	CD-2	CD-3.4	CD-4.4	CD-5.4	CD-7.0	CD-8.4	CD-11.5	CD-15	CD-18	CD-22	CD-25	CD-21
Capacity (KW)	0.6	1	1.3	1.6	2	2.3	3.5	4.4	5.2	6.4	8.1	6.1
Heat Tnsfer Area (m ²)	2	3.4	4.4	5.4	7	8.4	11.5	15	18	22	25	21
Fan Motor	Input (W)	1×35	1×35	1×60	1×75	1×90	1×150	1×150	1×150	1×180	1×180	1×90
	Dia (mm)	200	200	250	300	300	350	350	350	400	400	300
	Air Flow (m ³ /h)	410	410	750	1350	1350	3100	3100	3100	4500	4500	2700
	Voltage (V)	220	220	220	220	220	380	380	380	380	380	380
Connection Pipe(mm)	Inlet	φ10	φ12	φ12	φ12	φ12	φ16	φ16	φ16	φ19	φ19	φ16
	Outlet	φ10	φ12	φ12	φ12	φ12	φ12	φ12	φ12	φ16	φ16	φ12
Overall Size (mm) (L×W×H)	320×100×230	320×100×230	370×100×280	440×100×330	440×135×330	500×130×430	480×180×430	550×180×480	590×180×530	590×180×530	720×180×580	840×180×430

Model	CD-28	CD-33	CD-36	CD-43	CD-48	CD-55	CD-70A	CD-80A	CD-100	CD-130	CD-150	CD-180
Capacity (KW)	8.2	11.2	12.6	14.8	17.5	19.2	20.5	24.4	29.6	38.2	47.2	54
Heat Tnsfer Area (m ²)	28	33	36	43	48	55	70	80	100	130	150	180
Fan Motor	Input (W)	2×150	2×150	2×180	2×180	2×180	2×180	2×250	2×250	4×180	4×180	4×180
	Dia (mm)	350	350	400	400	400	400	450	450	400	400	400
	Air flow (m ³ /h)	6200	6200	9000	9000	9000	9000	10360	10360	18000	18000	18000
	Voltage (V)	380	380	380	380	380	380	380	380	380	380	380
Connection Pipe (mm)	Inlet	φ19	φ19	φ19	φ22	φ22	φ22	φ28	φ28	φ28	φ28	φ35
	Outlet	φ16	φ16	φ16	φ16	φ16	φ19	φ19	φ22	φ22	φ22	φ22
Overall Size (mm) (L×W×H)	900×180×430	900×200×480	1015×180×580	1015×180×680	1250×200×630	1250×200×730	1250×200×830	1250×200×830	1250×200×830	1250×200×1130	1315×250×1330	1315×270×1330

Remarks: Capacity test condition: refrigerator temperature: 0°C, DT: 8°C

CDV Condenser

Model	CDV-72	CDV-111	CDV-158	CDV-180	CDV-219	CDV-270	CDV-328	CDV-383	CDV-455	CDV-570
Cooling (KW)	21.5	33.5	47.5	54	65	81	99	115	137	171
Heat Tnsfer Area (m ²)	72	111	158	180	219	270	328	383	455	570
Fan Motor	Input (W)	1×600	2×600	2×600	2×780	2×780	3×800	3×800	3×800	4×800
	Dia (mm)	550	550	550	600	600	630	630	630	630
	Voltage (V)	380	380	380	380	380	380	380	380	380
	Air Flow(m ³ /h)	7950	16200	16200	20700	20700	34800	34800	34800	44000
Connection Pipe (mm)	Inlet	2×φ22	2×φ22	2×φ22	2×φ28	2×φ28	2×φ28	2×φ28	2×φ35	2×φ35
	Outlet	2×φ16	2×φ16	2×φ16	2×φ22	2×φ22	2×φ22	2×φ22	2×φ28	2×φ28
Overall Size (mm) (L×W×H)	940×980×880	1540×980×960	1540×980×960	1840×980×1100	1840×980×1100	2640×1030×1100	2640×1030×1100	3040×1030×1100	3240×1050×1200	3240×1200×1200

CDG Condenser

Model	CDG-200	CDG-300	CDG-400	CDG-500	CDG-600	CDG-800	CDG-1000	CDG-1200
Cooling (KW)	66	109	132	165	198	264	330	396
Heat Tnsfer Area (m ²)	200	300	400	500	600	800	1000	1200
Fan Motor	Input (W)	1×1800	2×1800	2×1800	3×1800	3×1800	4×1800	6×1800
	Dia (mm)	800	800	800	800	800	800	800
	Voltage (V)	380	380	380	380	380	380	380
	Air Flow(m ³ /h)	18660	39000	37320	28500	55980	74640	115070
Connection Pipe (mm)	Inlet	42	42	54	54	54	67	2×67
	Outlet	35	35	42	42	42	54	2×54
Overall Size (mm) (L×W×H)	1600×1220×1340	2900×1220×1340	2900×1220×1340	4200×1220×1340	4200×1220×1340	5500×1220×1340	4200×2220×1340	4200×2220×1340

New Generation Condenser with Inner Groove Copper Tube



Nomenclature:

NCDV-27

- N :** Inner Groove Copper Tube Inside
- CD :** H Type Condenser
- V :** None for Standard H Type, V for V Type
- 27 :** Heat Transfer Area (m²)

Product Description:

- ★ With inner groove copper tube and corrugated fin, the New generation air cooled condensers could enlarge the heat exchange efficiency tremendously;
- ★ The optimal geometry and fins ripple make the condenser low flow drop, low airflow resistance, and low noise;
- ★ All of our products have been tested at 2.8MPa for the air leakage. R22, R134a, R404A, R407C, &R448 R449 could run on these units.



Supcool Refrigeration Equipment Factory

Model	NCD-4.6	NCD-5.2	NCD-6.9	NCD-7.9	NCD-9.9	NCD-12.2	NCD-15.2	NCD-16.6	NCD-19
Heat Transfer Capacity (KW)	4.56	5.13	6.95	7.96	9.92	12.20	15.2	16.6	18.99
Tube Volume (L)	1.0	1.2	1.5	1.9	2.0	2.3	3.1	3.7	4.4
Fan Motor	Input (W)	129	129	180	180	250	390	2x180	2x180
	Fan Motor	1xφ350	1xφ350	1xφ400	1xφ400	1xφ450	1xφ500	2xφ400	2xφ400
	Air Flow (m ³ /h)	2034	2154	3196	3017	4051	5119	5898	6148
Dimension (mm)	515x275x507	565x275x557	605x277x607	605x297x607	665x305x622	715x305x672	1015x297x622	1015x297x722	1215x297x722
Inlet Φ (mm)	19	19	19	19	19	19	19	22	22
Outlet Φ (mm)	16	16	16	16	16	16	16	19	19

Model	NCD-22.3	NCD-25.3	NCD-29.2	NCD-33.7	NCD-36.5	NCD-44	NCD-47	NCD-57	NCD-62
Heat Transfer Capacity (KW)	22.23	25.29	29.16	33.66	36.50	43.90	47.10	56.97	61.65
Tube Volume (L)	5.1	5.5	5.9	7.3	9.1	10.1	10.6	11.4	14.0
Fan Motor	Input (W)	4x129	2x250	2x390	4x180	4x180	2x600	4x250	4x390
	Fan Motor	4xφ350	2xφ450	2xφ500	4xφ400	4xφ400	2xφ550	4xφ450	4xφ500
	Air Flow (m ³ /h)	8856	9190	11082	12304	13024	15794	15840	21804
Dimension (mm)	1225x275x1072	1225x305x872	1225x305x922	1225x297x1122	1225x297x1322	1425x405x1322	1225x335x1322	1575x305x1322	1575x335x1322
Inlet Φ (mm)	25	25	25	25	32	32	32	32	32
Outlet Φ (mm)	22	19	22	22	25	25	25	25	25

Vtype Air Cooled Condenser

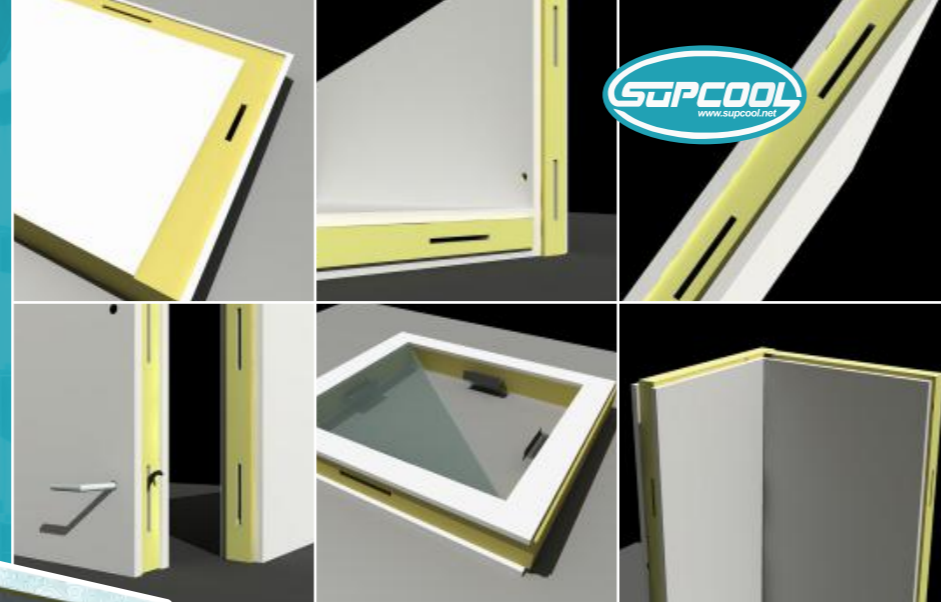
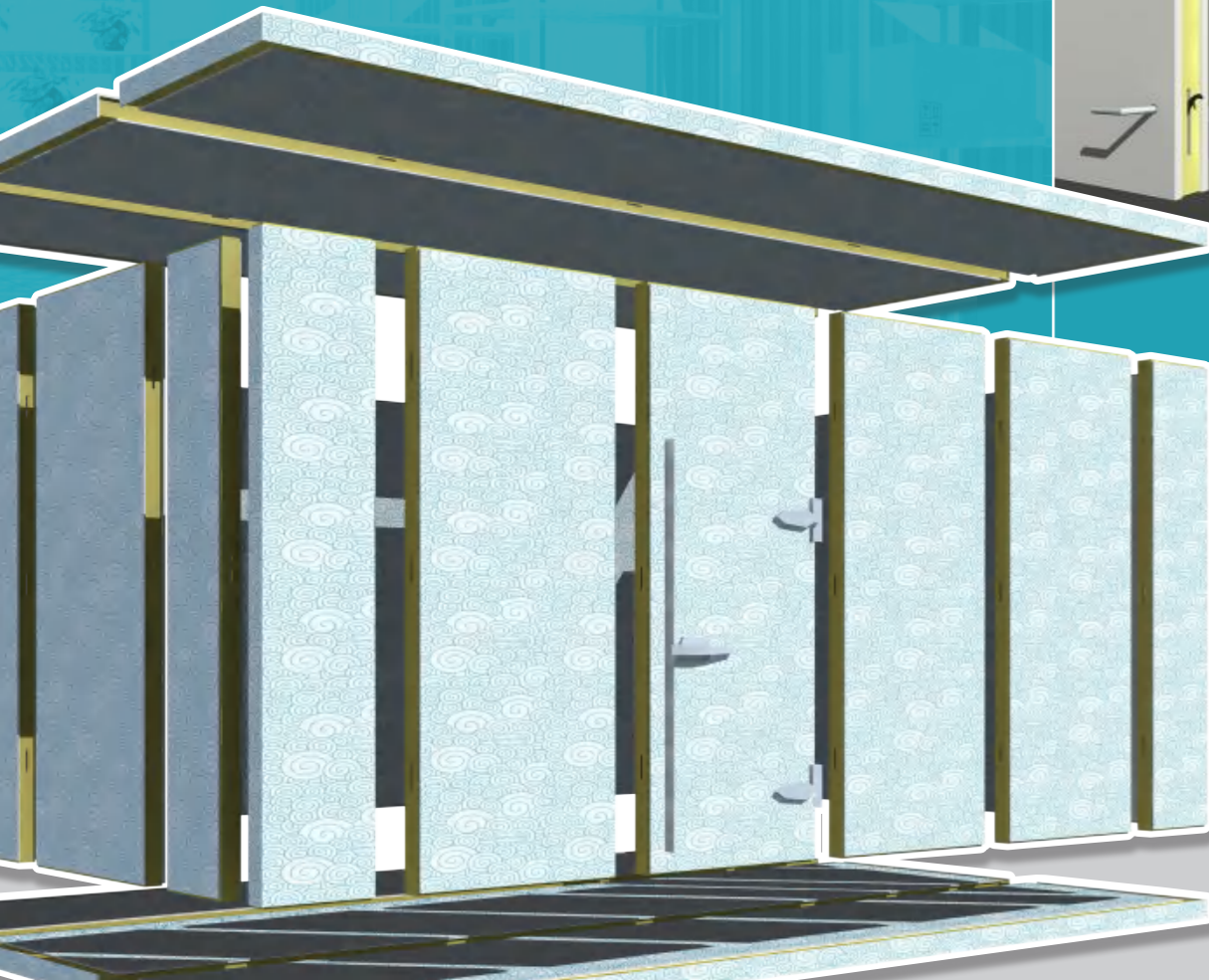
Model	NCDV-27	NCDV-39	NCDV-42	NCDV-47	NCDV-56	NCDV-59
Heat Transfer Capacity (KW)(R404A/R448A/R449A)	25	35.7	38.4	42.8	50.8	53
Tube Volume (L)	7.9	9.7	11.3	12	13.2	14
Fan Motor	Input (W)	2X250	2X600	2X600	2X780	2X800
	Fan Motor	2Xφ450	2Xφ550	2Xφ550	2Xφ600	2Xφ630
	Air Flow (m ³ /h)	9922	15584	15988	19064	22830
Dimension (mm)	1280X900X780	1480X900X780	1480X1000X870	1570X1000X860	1660X1000X860	1730X1050X900
Inlet Φ (mm)	2X25	2X32	2X32	2X32	2X32	2X32
Outlet Φ (mm)	2X19	2X25	2X25	2X25	2X25	2X25

Model	NCDV-62	NCDV-74	NCDV-85	NCDV-93	NCDV-98	NCDV-102	NCDV-132
Heat Transfer Capacity (KW)(R404A/R448A/R449A)	57	67	76	84	89	94	120
Tube Volume (L)	16.2	17.5	18.9	24	26.9	30	36.4
Fan Motor	Input (W)	2X800	3X780	3X800	3X800	3X800	4X800
	Fan Motor	2Xφ630	3Xφ600	3Xφ630	3Xφ630	3Xφ630	4Xφ630
	Air Flow (m ³ /h)	23536	28928	34020	35112	35388	35896
Dimension (mm)	2140X1000X860	2290X1000X860	2490X1000X860	2500X1150X990	2820X1150X990	2820X1100X1100	3450X1100X1100
Inlet Φ (mm)	2X32	2x32	2x32	2X42	2X42	2X42	2X50
Outlet Φ (mm)	2X25	2x28	2x28	2X32	2X32	2x32	2x32

Cold Room



Supcool Refrigeration Equipment Factory

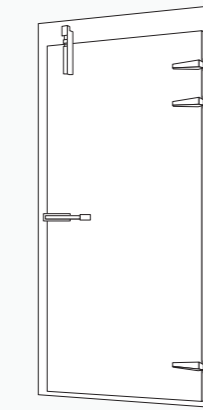


Product Description:

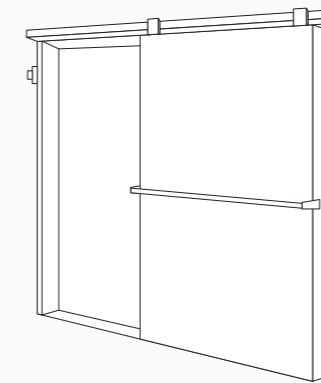
- ★ Polyurethane sandwiched panels are of 100% polyurethane insulation, which is constructed by being foamed in place with retarded polyurethane using high pressure. Average density is 45kg/m³;
- ★ The standard panel width is 960mm, the maximum lengths of panels are provided 6m till now. Also the thickness can reach 100mm/150mm;
- ★ Besides the standard ones, customized panels are also available. As for the surface material, you can choose either one among stainless steel plate, painted galvanized mild steel and embossing aluminum plate;
- ★ Every panel consists of tongue and groove construction and can be tightened by a number of eccentric fasteners, which may be screwed easily with a hexagonal key.



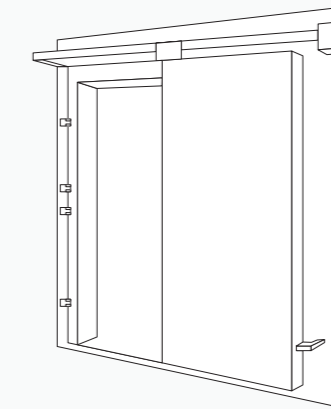
(1)



(2)



(3)



(4)

Standard Hinged Door

Part Model	Door Frame Dimension(mm)	Clear Opening Dimension(mm)
L700	790×1790	700×1700
L900	1000×2000	900×1900

Heat insulation material: Polyurethane(Thickness:100mm) Surface Material: Painted Galvanized Mild Steel

**To be adjusted as per specific requirement

Automatically Swing Door

Part Model	Door Frame Dimension(mm)	Door Opening Dimension(mm)
H700	790×1790	700×1700
H900	1000×2000	900×1900

Heat insulation material: Polyurethane(Thickness:100mm) Surface Material: Painted Galvanized Mild Steel

**To be adjusted as per specific requirement

Standard Manual Sliding Door

Part Model	Door Frame Dimension(mm)	Clear Opening Dimension(mm)
MS900×1040	1040×2040	900×1900
MS1040×1180	1180×2040	1040×1900
MS1200×1340	1340×2140	1200×2000
MS1500×1640	1640×2140	1500×2000

Automatically Sliding Door

Part Model	Door Dimension(mm)	Clear Opening Dimension(mm)
AS900×1040	1040×2040	900×1900
AS1040×1180	1180×2040	1040×1900
AS1200×1340	1340×2140	1200×2000
AS1500×1640	1640×2140	1500×2000

Heat insulation material: Polyurethane(Thickness:100mm) Surface Material: Painted Galvanized Mild Steel

**To be adjusted as per specific requirement



Door Hinges

Part No.	Description
FC-306	Reversible Reach-in Edge mount Can-lift Hinge
FC-1132	Reversible Reach-in Edge mount Can-lift Hinge
FC-1332	Reversible Reach-in Edge mount Can-lift Hinge(high 32mm)
FC-1336	Reversible Reach-in Edge mount Can-lift Hinge(high 36mm)
FC-1238	Reversible Reach-in Plane Hinge
FC-1230S	Reversible Reach-in Plane Hinge(with spring)
FC-201	Reversible Reach-in Plane Hinge(w/o spring)
FC-1424	Cam-Lift Hinge 24mm
FC-380	Cam-Lift Hinge 32mm
FC-1432	Cam-Lift Hinge 32mm
FC-1470	Reach-in door hinge, adjustable height from 40 to 70 mm, Zinc body.
FC-1460	Reach-in door hinge, adjustable height from 32 to 60 mm, Zinc body.
FC-1450	Reach-in door hinge, adjustable height from 32 to 50 mm, Zinc body.
FC-8064-1	Hinge for flush door, width 100mm, length 100mm, stainless steel.
FC-650(3.5)	Refrigerator spring hinge, spring diameter: 3.5mm
FC-650(4.0)	Refrigerator spring hinge, spring diameter: 4.0mm
FC-650(5.0)	Refrigerator spring hinge, spring diameter: 5.0mm

Door Latches

Part No.	Description
FC-1178	Safety latches with inside release handle, adjustable height from 35mm to 70mm, Zinc body
FC-1200	Edge mount mechanical latches, adjustable height from 18mm to 22mm, Zinc body
FC-1250	Edge mount mechanical latches, adjustable height from 18mm to 22mm, Zinc body
FC-1240	Edge mount mechanical latches, adjustable height from 18mm to 22mm, Zinc body
FC-1060	6" Lever & Roller latches, Zinc body
FC-1040	4" Lever & Roller latches, Zinc body
FC-1400	Edge mount mechanical latches, adjustable height from 26mm to 36.5mm, Zinc body
FC-1061	Edge mount mechanical latches, adjustable height from 26mm to 36mm, Zinc body
FC-3-0681	Edge mount mechanical latches, adjustable height from 26mm to 36mm, Zinc body
FC-3-0680	Edge mount mechanical latches, adjustable height from 26mm to 36mm, Zinc body
FC-4000	Safety latch
FC-4100	Safety latch
FC-4255	Safety latch

Pressure Ventilator for Coldroom

	FC-110	Aluminum Alloy Surface		FC-220	Abs Frame
		Stainless Steel Filter			Stainless Filter
		Electric Heater to Prevent Frozen(220V/36W)			Electric Heater to Prevent Frozen(220V/36W)

LED Light

LED-401	<ul style="list-style-type: none"> Voltage:220V/110V/36V Power:8W Frequency:50Hz/60Hz Temperature:6000-6500K Display:more than 70 Light flux:800LM Protection level:IP68 Used in < 4M height coldroom Operating temperature:-20° to 40° Service lifetime:10000 hours
LED-407	<ul style="list-style-type: none"> Voltage:220V/110V Power:20W Frequency:50Hz/60Hz Temperature:6000-6500K Display:above 70 Light flux:2000LM Protection level:IP68 Used in < 4M height coldroom Operating temperature:-20° to 40° Service lifetime:10000 hours
LED-420	<ul style="list-style-type: none"> Voltage:220V/110V Power:36W Frequency:50Hz/60Hz Temperature:6000-6500K Display:above 70 Light flux:3600LM Protection level:IP65 Used in < 4M height coldroom Operating temperature:-20° to 40° Service lifetime:10000 hours
LED-501	<ul style="list-style-type: none"> Voltage:220V/36V Power:15W Frequency:50Hz Temperature:6000-6500K Display:above 70 Light flux:3000LM Protection level:IP65 Used in < 5M height coldroom Operating temperature:-20° to 40° Service lifetime:10000 hours
LED-601	<ul style="list-style-type: none"> Voltage:220V/110V Power:30W Frequency:50Hz /60Hz Temperature:6000-6500K Display:more than 70 Light flux:3000LM Protection level:IP65 Used in 6M to 8M height coldroom Operating temperature:-20° to 40° Service lifetime:10000 hours
LED-1102	<ul style="list-style-type: none"> Voltage:220V/110V Power:100W Frequency:50Hz Temperature:6000-6500K Display:more than 70 Light flux:9000LM Protection level:IP65 Used in < 8M height coldroom Operating temperature:-20° to 40° Service lifetime:10000 hours



Mini Type No.	Length(cm)	Power Supply	Luminous Flux	Emitting Color	LED Type	LED Amount	Voltage(v)	Temperature Range
LED-3528-5009	50	2.4	160lm	Cold / Warm White	SMD3528	30 caps	DC12V	-30~60° C
LED-3528-1009	100	4.8	320lm	Cold / Warm White	SMD3528	60 caps	DC12V	-30~60° C
LED-3528-15009	150	7.2	450lm	Cold / Warm White	SMD3528	90 caps	DC12V	-30~60° C

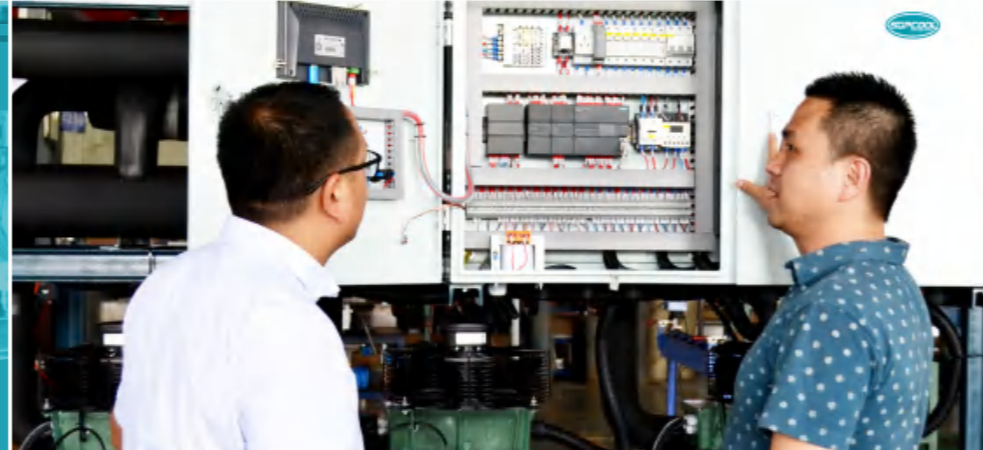
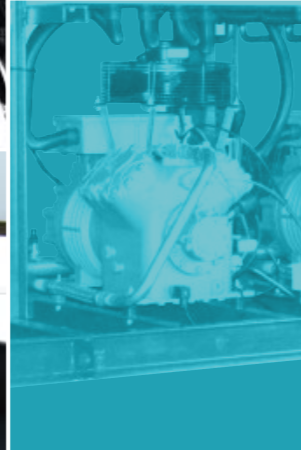
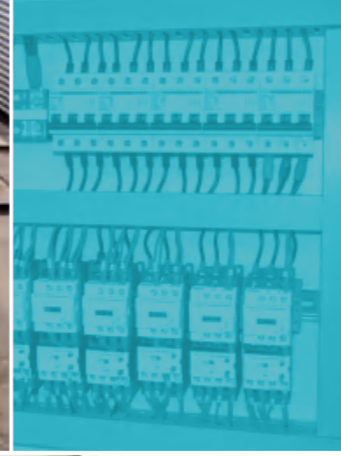
Triangle Type No.	Length(cm)	Power Supply	Luminous Flux	Emitting Color	LED Type	LED Amount	Voltage(v)	Temperature Range
LED-3528-5010	50	2.4	140lm	Cold / Warm White	SMD3528	30 caps	DC12V	-30~60° C
LED-5050-5010	50	7.2	430lm	Cold / Warm White	SMD5050	30 caps	DC12V	-30~60° C
LED-3528-10010	100	4.8	280lm	Cold / Warm White	SMD3528	60 caps	DC12V	-30~60° C
LED-5050-10010	100	14.4	850lm	Cold / Warm White	SMD5050	60 caps	DC12V	-30~60° C
LED-3528-15010	150	7.2	430lm	Cold / Warm White	SMD3528	90 caps	DC12V	-30~60° C
LED-5050-15010	150	21.6	1250lm	Cold / Warm White	SMD5050	90 caps	DC12V	-30~60° C
LED-3528-15009	150	7.2	450lm	Cold / Warm White	SMD3528	90 caps	DC12V	-30~60° C

U Type No.	Length(cm)	Power Supply	Luminous Flux	Emitting Color	LED Type	LED Amount	Voltage(v)	Temperature Range
LED-3528-5011	50	2.4	140lm	Cold / Warm White	SMD3528	30 caps	DC12V	-30~60° C
LED-5050-5011	50	7.2	430lm	Cold / Warm White	SMD5050	30 caps	DC12V	-30~60° C
LED-3528-10011	100	4.8	280lm	Cold / Warm White	SMD3528	60 caps	DC12V	-30~60° C
LED-5050-10011	100	14.4	850lm	Cold / Warm White	SMD5050	60 caps	DC12V	-30~60° C
LED-3528-15011	150	7.2	430lm	Cold / Warm White	SMD3528	90 caps	DC12V	-30~60° C
LED-5050-15011	150	21.6	1250lm	Cold / Warm White	SMD5050	90 caps	DC12V	-30~60° C

Remark: Coldroom temp. -25°C ; △ T=6°C

SUPCOOL REFRIGERATION EQUIPMENT FACTORY

www.Supcool.net



Creating The Best in Refrigeration / Comprehensive Refrigeration Solution Provider

Creating the Best in Refrigeration



Supcool Refrigeration Equipment Factory

Add: No.8# Jiangsan Road Sanjiang Industry Park, Shengzhou China

Tel: 0086 - 574 - 8719 4703 Fax: 0086 - 574 - 8730 7052

E-mail: Sales@supcool.net Website: www.supcool.net

